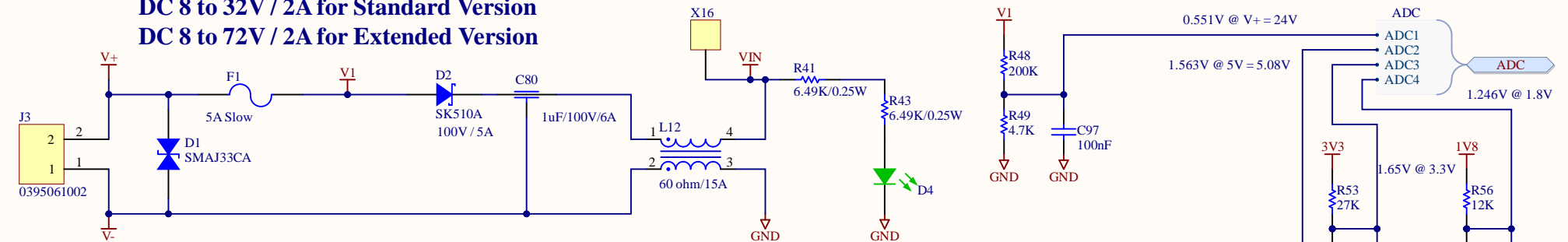
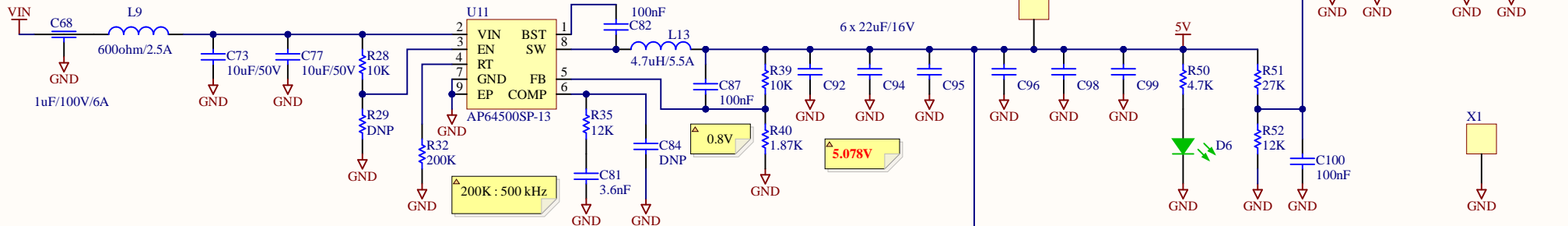


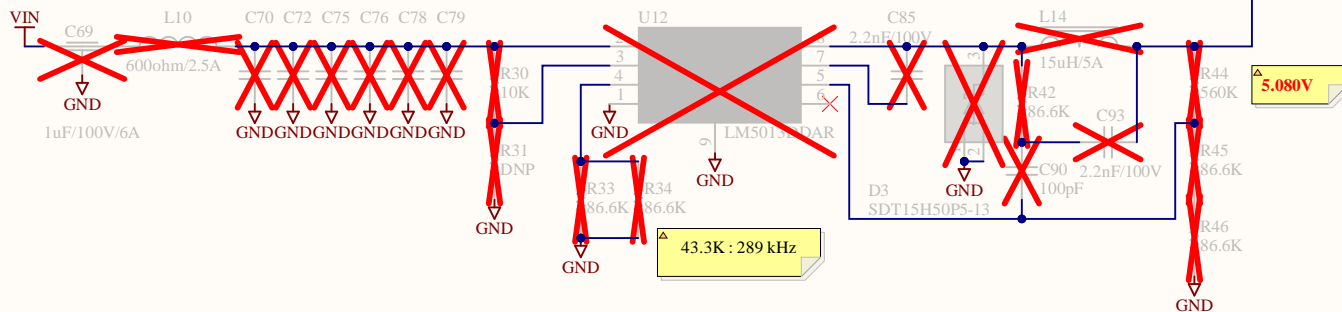
# DC 8 to 32V / 2A for Standard Version DC 8 to 72V / 2A for Extended Version



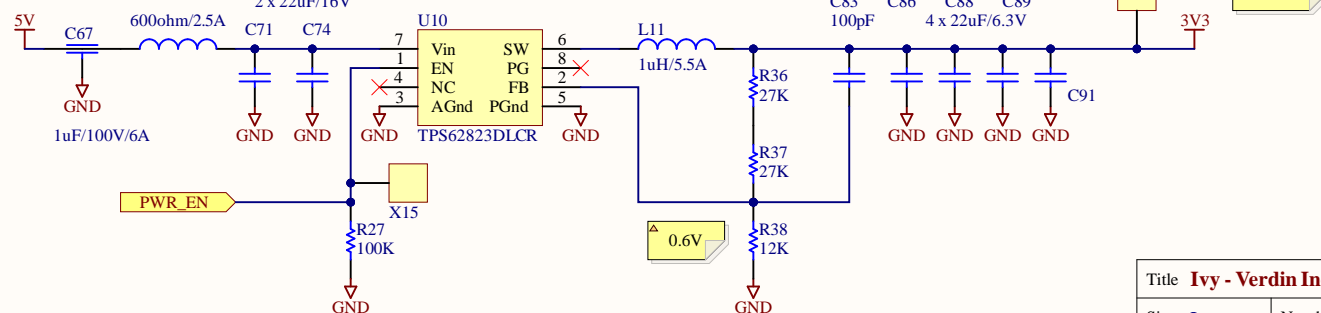
## Step-Down 5V / 3A for Standard Version



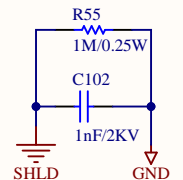
## Step-Down 5V / 2.5A for Extended Version



## Step-Down 3.3V / 1A



Mounting Holes connections



Title **Ivy - Verdin Industrial Board Rev 1.1**

Size: **Letter**

Number: **46806005**

Revision:

Date: **30.05.2025**

Time: **8:24:53**

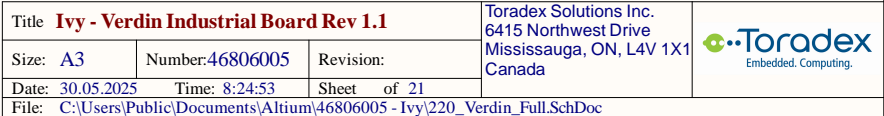
Sheet **of 21**

File: **100\_Power.SchDoc**

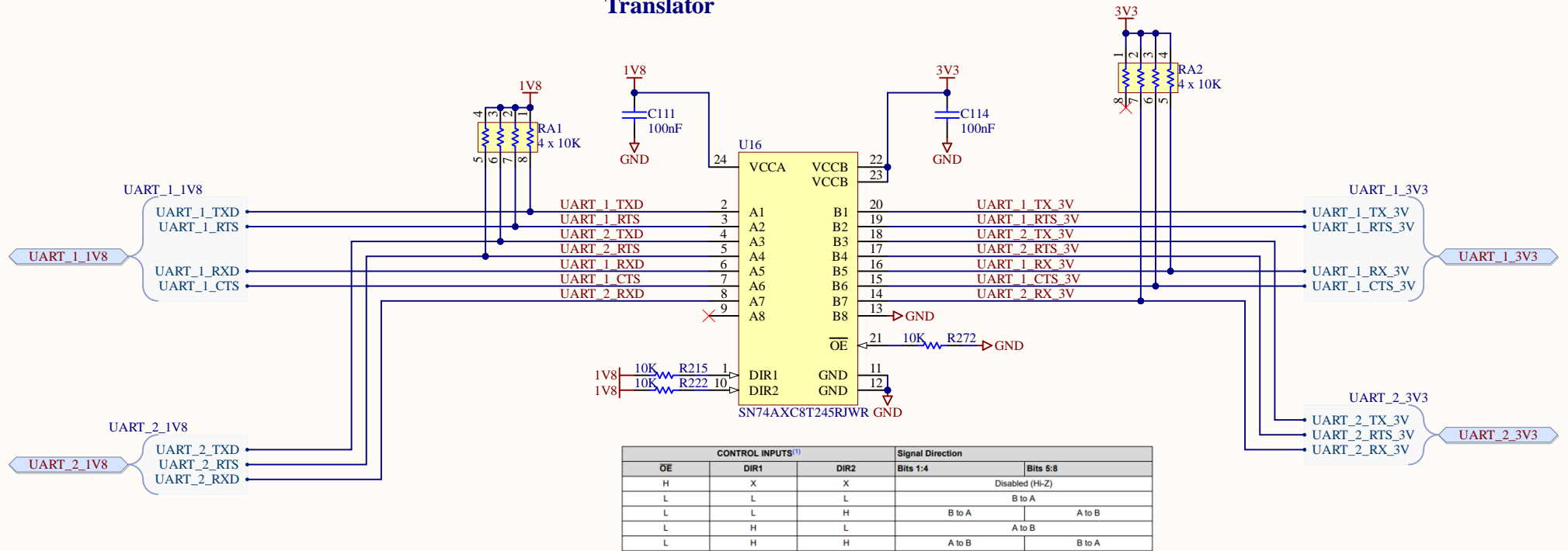
Toradex Solutions Inc.  
6415 Northwest Drive  
Mississauga, ON, L4V 1X1  
Canada







## Translator



Title **Ivy - Verdin Industrial Board Rev 1.1**

Size: Letter

Number: 46806005

Revision:

Date: 30.05.2025

Time: 8:24:53

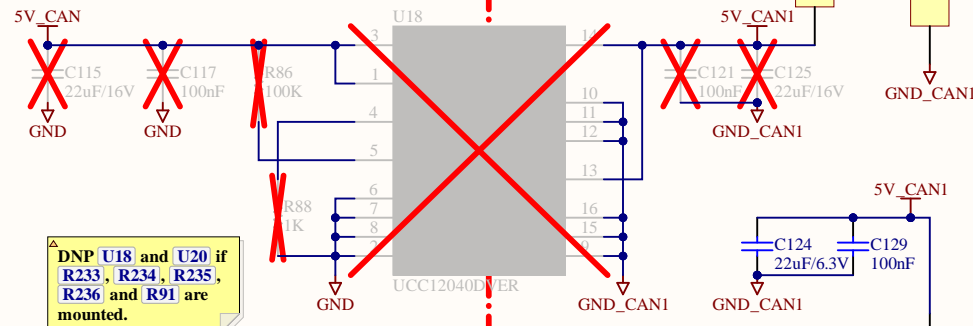
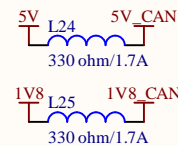
Sheet of 21

File: 240\_Translators.SchDoc

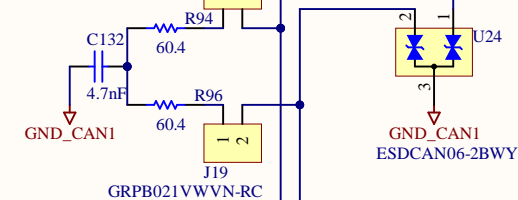
Toradex Solutions Inc.  
6415 Northwest Drive  
Mississauga, ON, L4V 1X1  
Canada



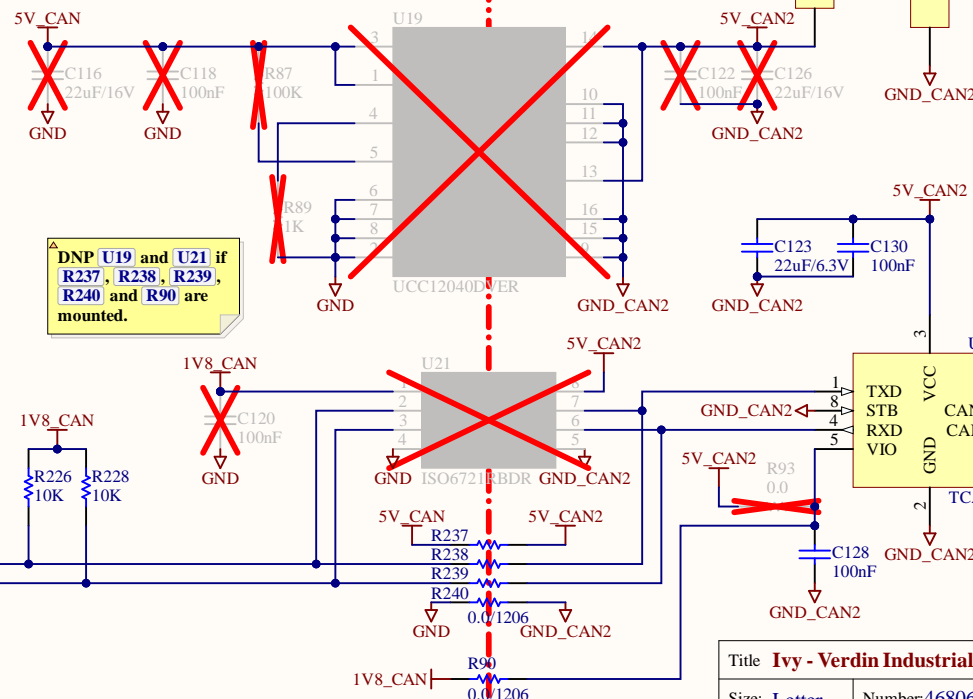
## CAN Transceiver #1



## Termination



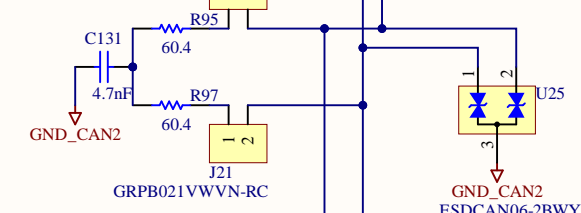
## CAN Transceiver #2



## Field Isolation 1

## Field Isolation 2

## Termination



Title **Ivy - Verdin Industrial Board Rev 1.1**

Size: Letter

Number: 46806005

Revision:

Date: 30.05.2025

Time: 8:24:53

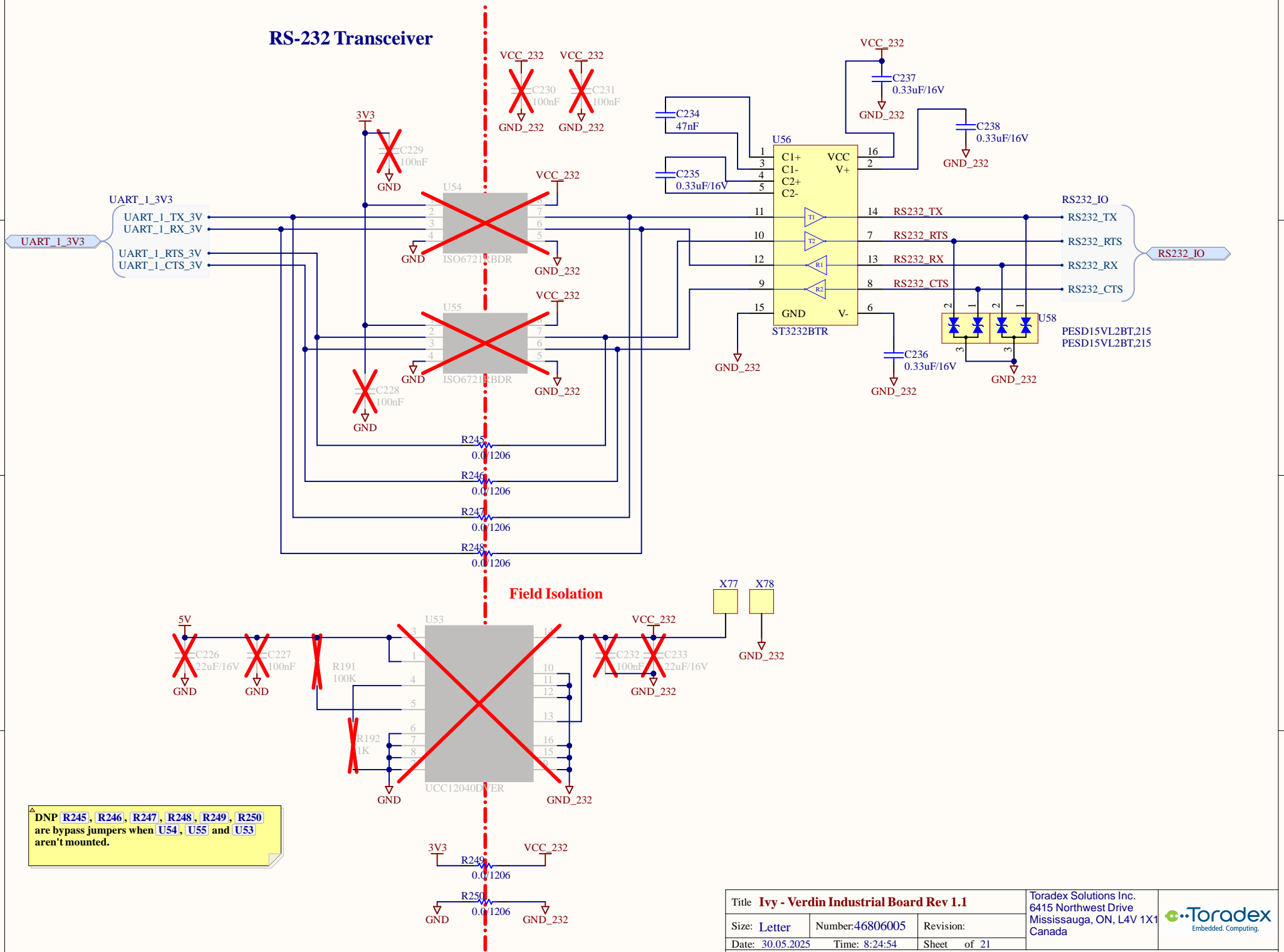
Sheet of 21

File: 300\_CAN\_Transceivers.SchDoc

Toradex Solutions Inc.  
6415 Northwest Drive  
Mississauga, ON, L4V 1X1  
Canada



## RS-232 Transceiver



Title **Ivy - Verdin Industrial Board Rev 1.1**

Size: Letter

Number: 46806005

Revision:

Date: 30.05.2025

Time: 8:24:54

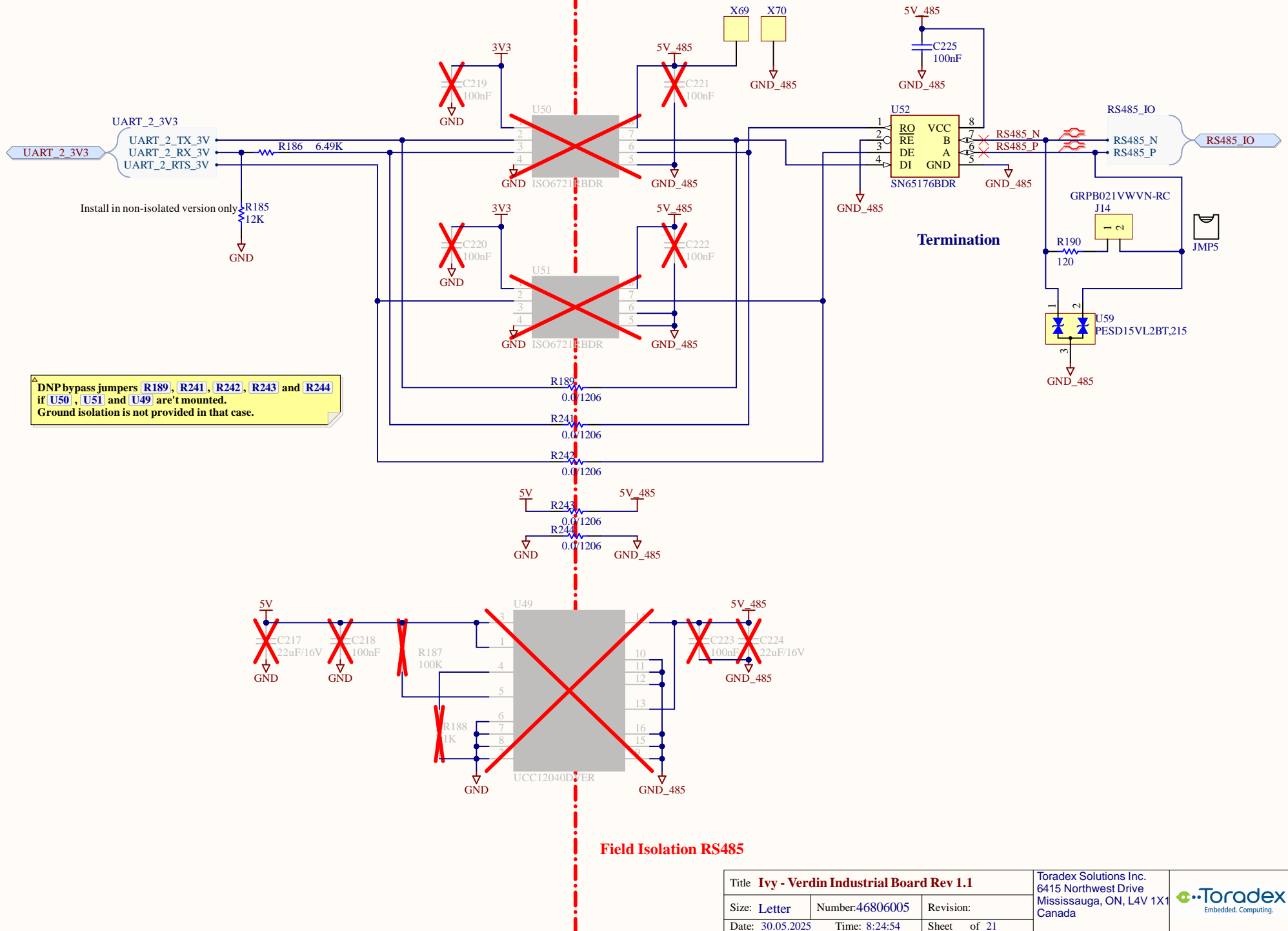
Sheet of 21

File: 320\_RS-232.SchDoc

Toradex Solutions Inc.  
6415 Northwest Drive  
Mississauga, ON, L4V 1X1  
Canada



## RS-485 Transceiver



Title **Ivy - Verdin Industrial Board Rev 1.1**

Size: Letter

Number: 46806005

Revision:

Date: 30.05.2025

Time: 8:24:54

Sheet of 21

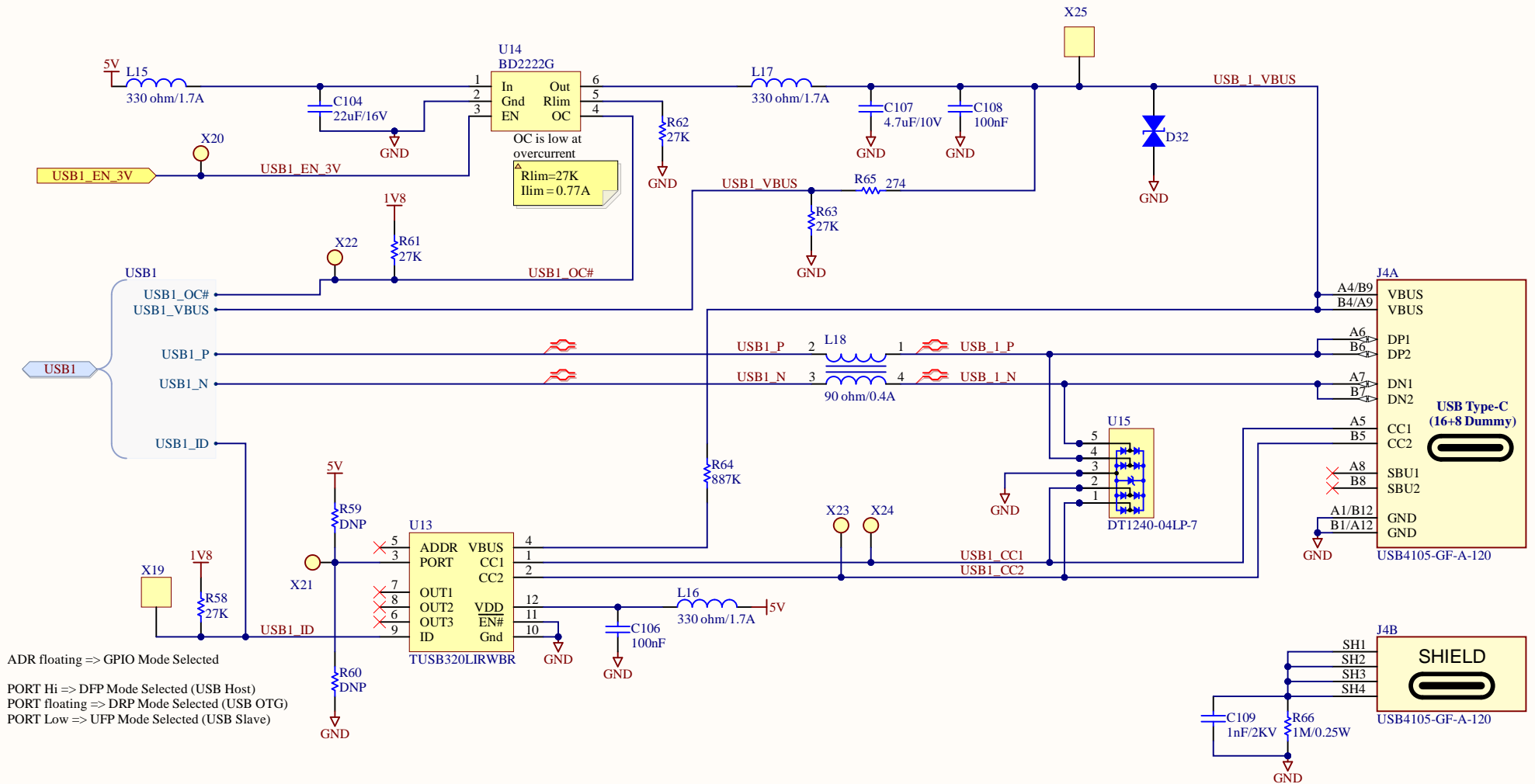
File: 330\_RS-485.SchDoc


Toradex Solutions Inc.  
6415 Northwest Drive  
Mississauga, ON, L4V 1X1  
Canada



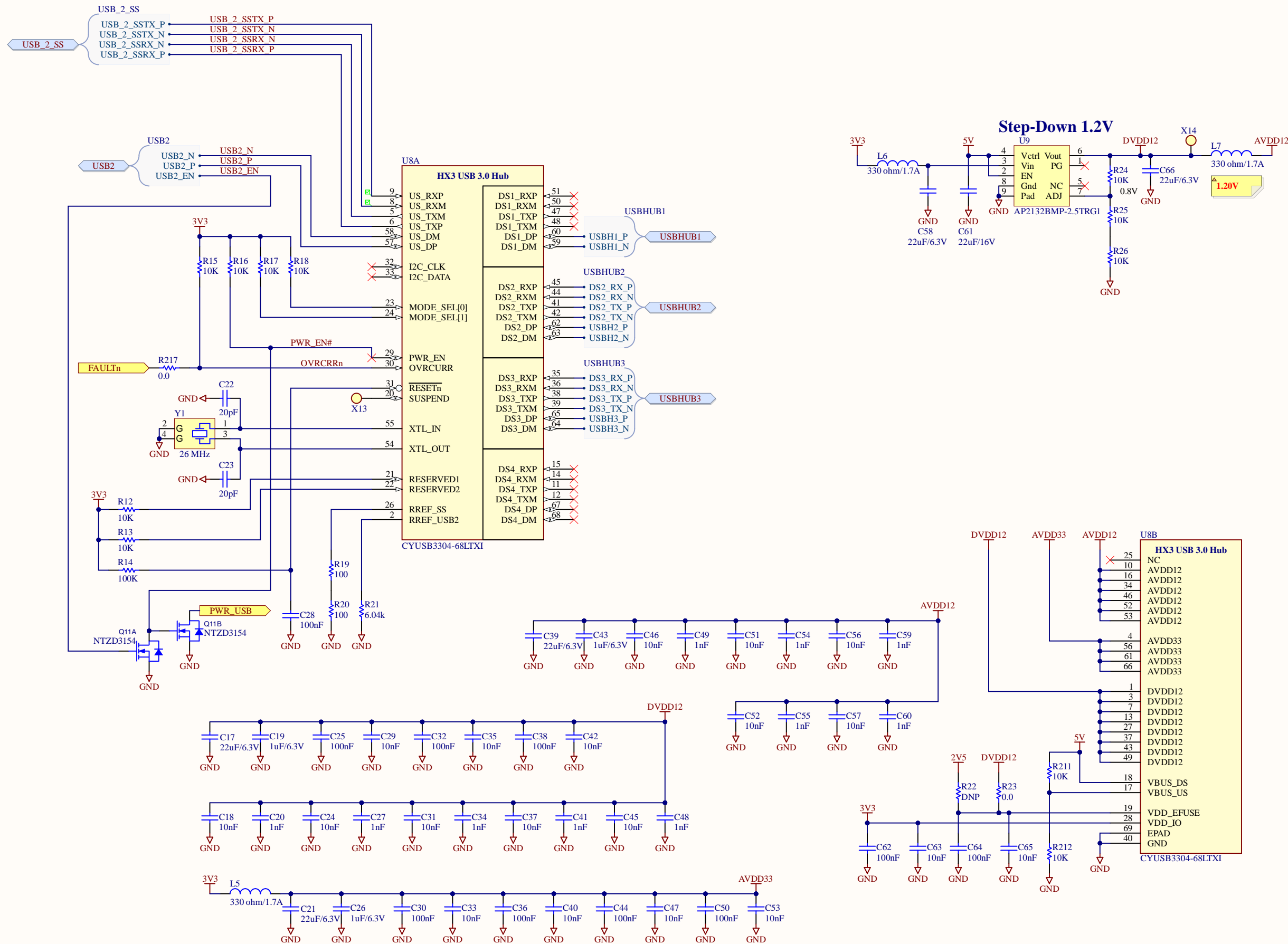


## USB1 - OTG

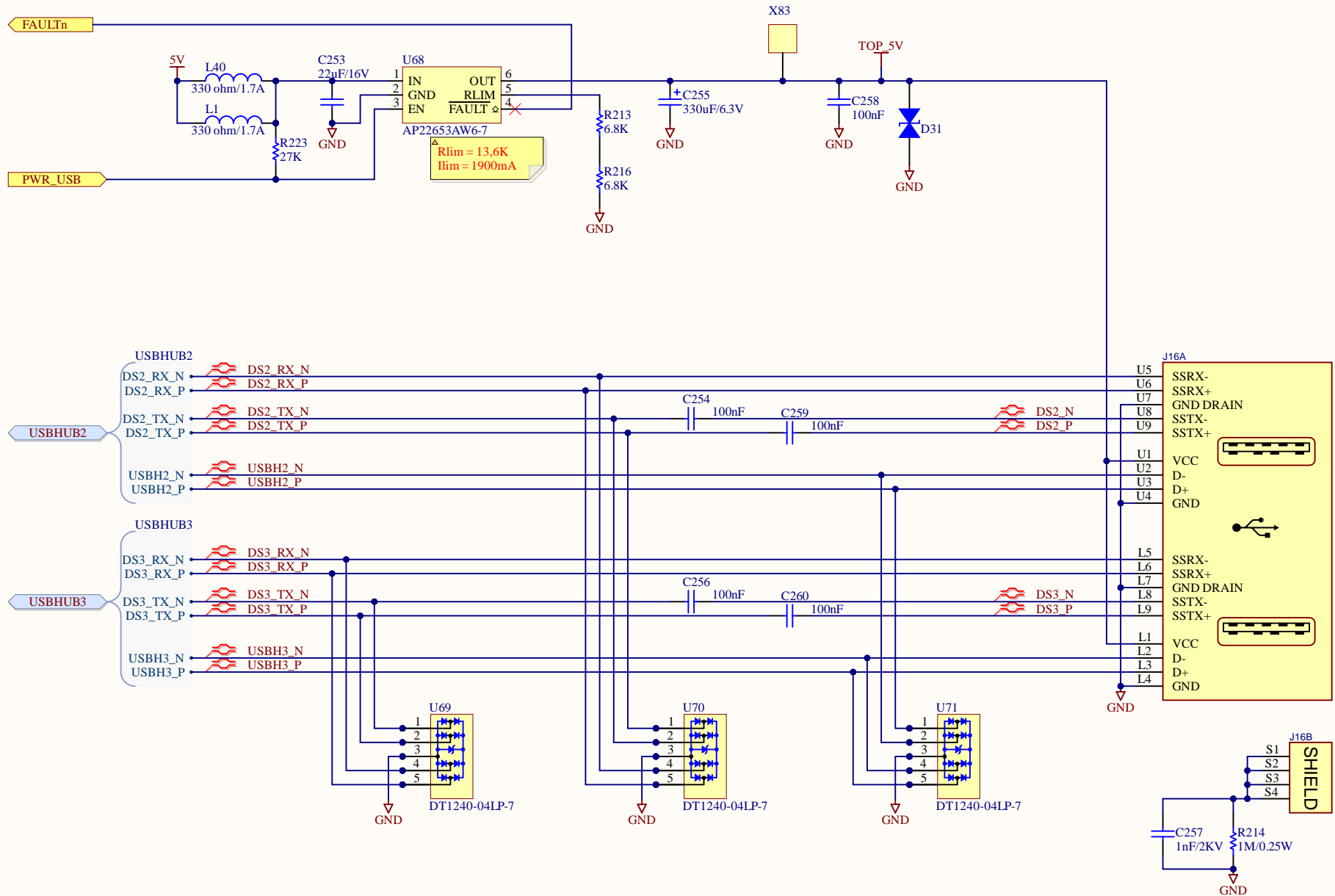


|  |                         |                    |  |   |
|--|-------------------------|--------------------|--|---|
| Title <b>Ivy - Verdin Industrial Board Rev 1.1</b> |                         |                    | Toradex Solutions Inc.<br>6415 Northwest Drive<br>Mississauga, ON, L4V 1X1<br>Canada | <br>Embedded. Computing. |
| Size: <b>Letter</b>                                | Number: <b>46806005</b> | Revision:          |  |   |
| Date: <b>30.05.2025</b>                            | Time: <b>8:24:54</b>    | Sheet of <b>21</b> |  |   |
| File: <b>400_USB1_OTG.SchDoc</b>                   |                         |                    |  |   |

USB Hub



## 2x USB Type-A Host Connectors



Title **Ivy - Verdin Industrial Board Rev 1.1**

Size: Letter

Number: 46806005

Revision:

Date: 30.05.2025

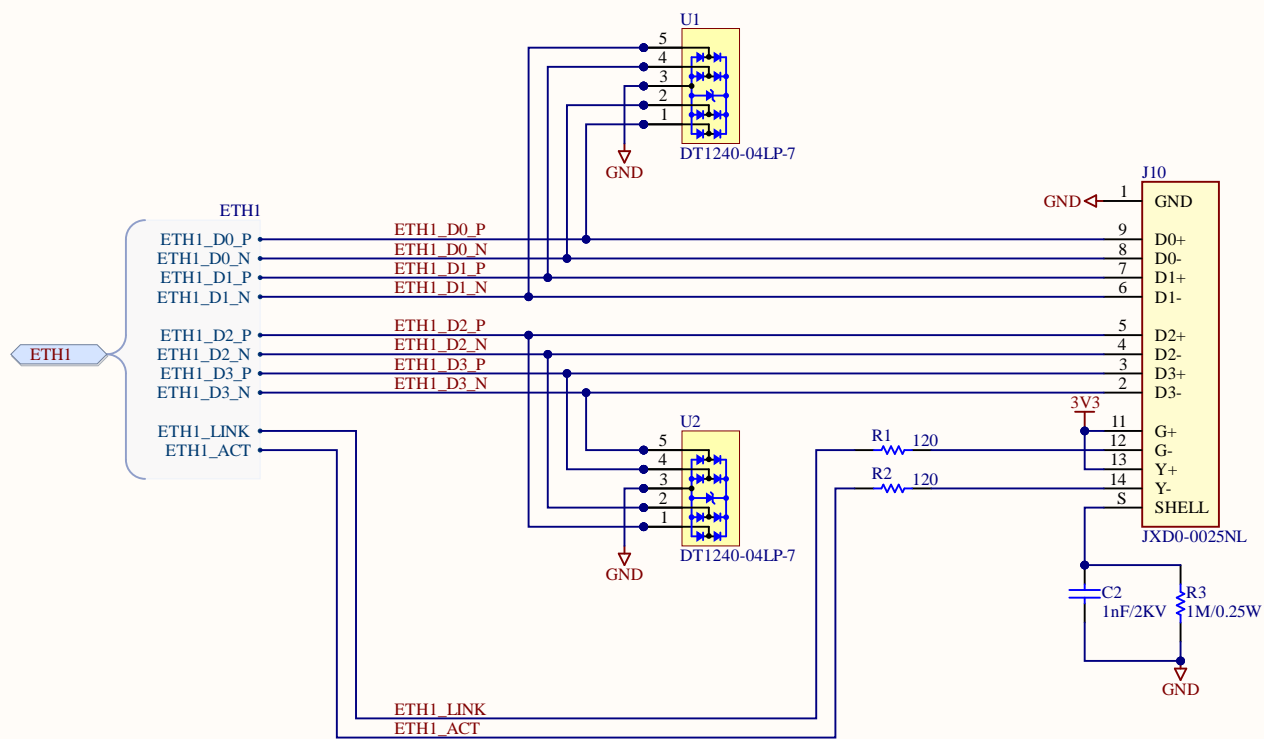
Time: 8:24:54

Sheet of 21

File: 510\_USB\_Type\_A\_Conn.SchDoc

Toradex Solutions Inc.  
6415 Northwest Drive  
Mississauga, ON, L4V 1X1  
Canada





Title **Ivy - Verdin Industrial Board Rev 1.1**

Size: Letter

Number: 46806005

Revision:

Date: 30.05.2025

Time: 8:24:54

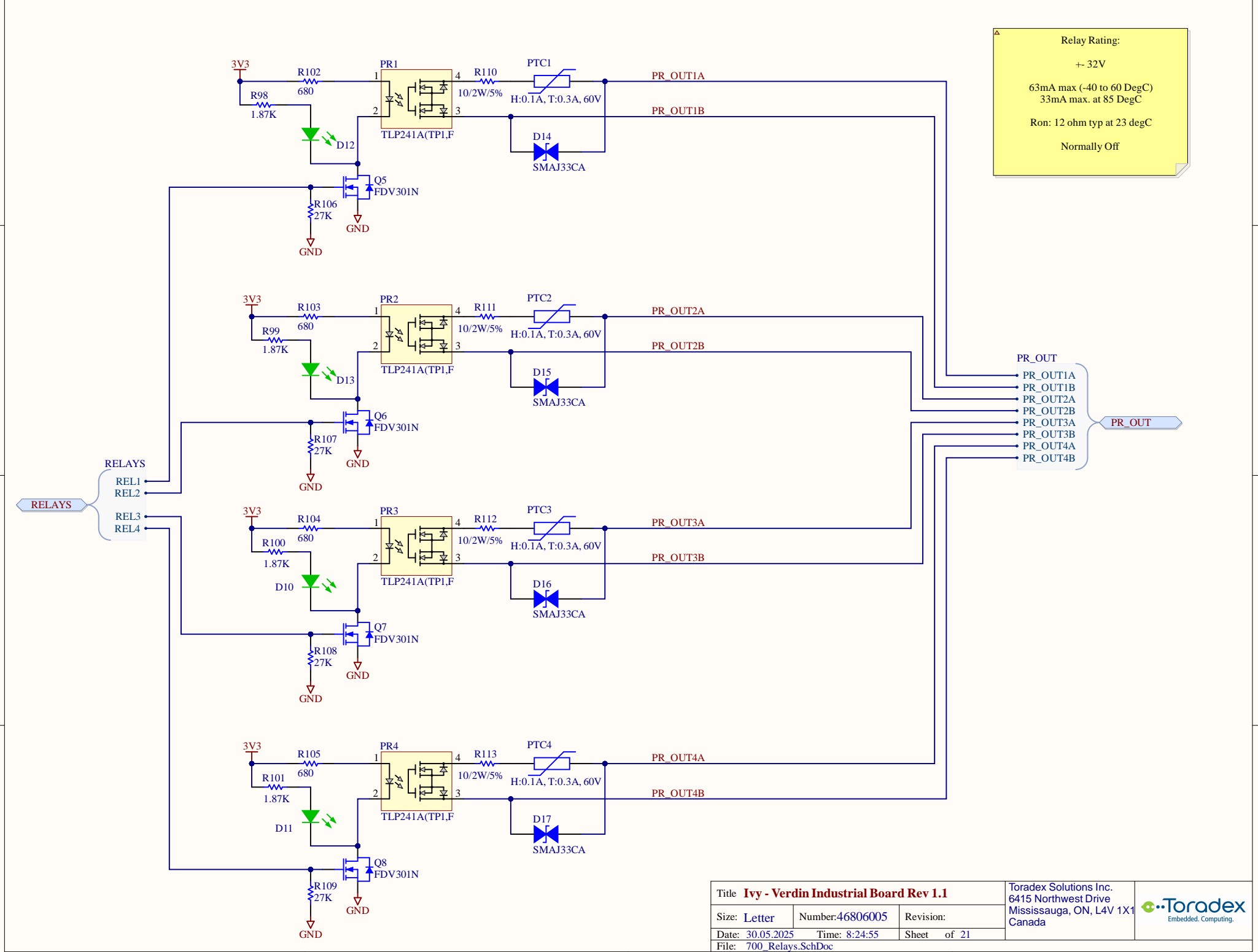
Sheet of 21

File: 600\_Ethernet.SchDoc

Toradex Solutions Inc.  
6415 Northwest Drive  
Mississauga, ON, L4V 1X1  
Canada





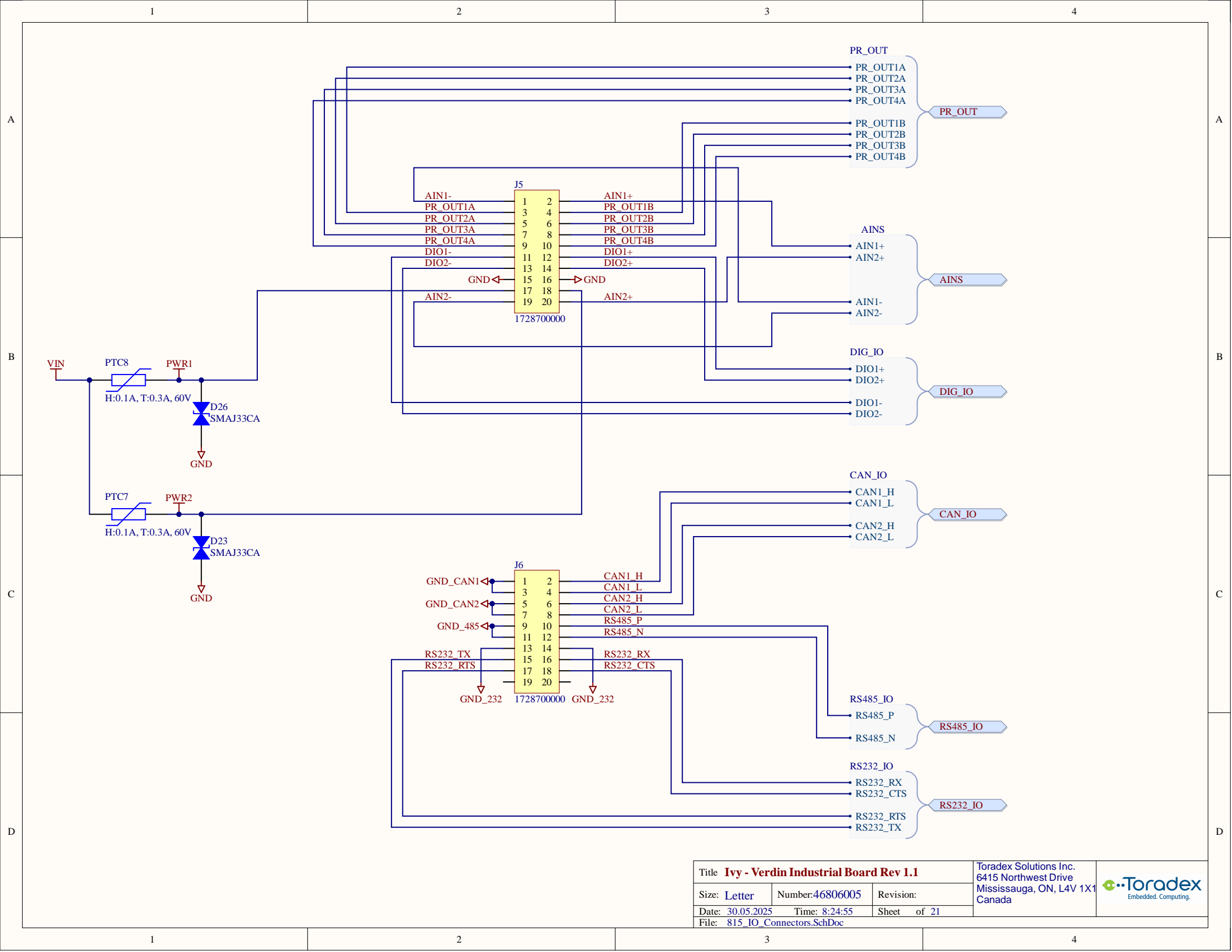


Relay Rating:  
+ 32V  
63mA max (-40 to 60 DegC)  
33mA max. at 85 DegC  
Ron: 12 ohm typ at 23 degC  
Normally Off









Title **Ivy - Verdin Industrial Board Rev 1.1**

Size: Letter

Number: 46806005

Revision:

Date: 30.05.2025

Time: 8:24:55

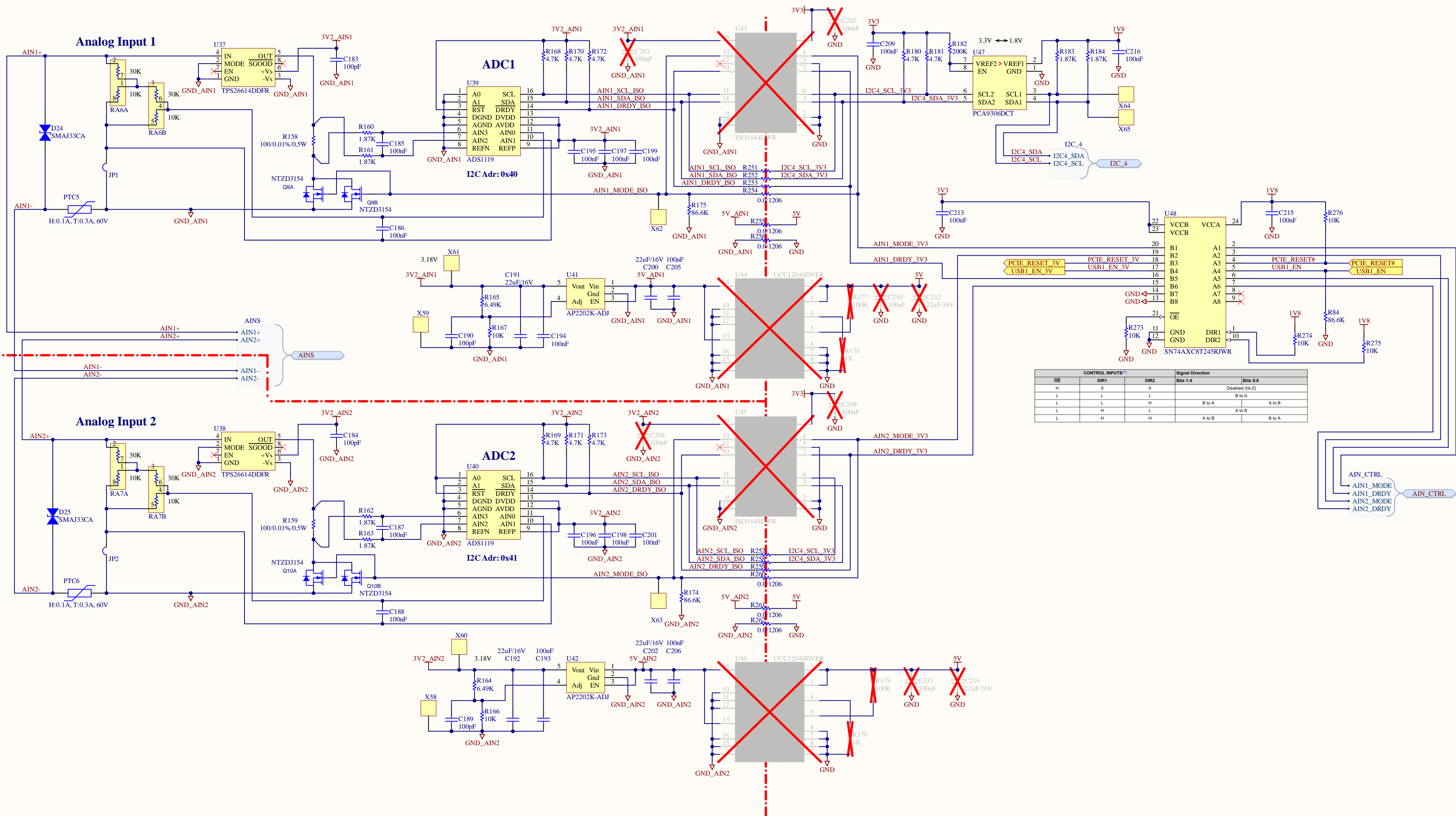
Sheet of 21

File: 815\_IO\_Connectors.SchDoc

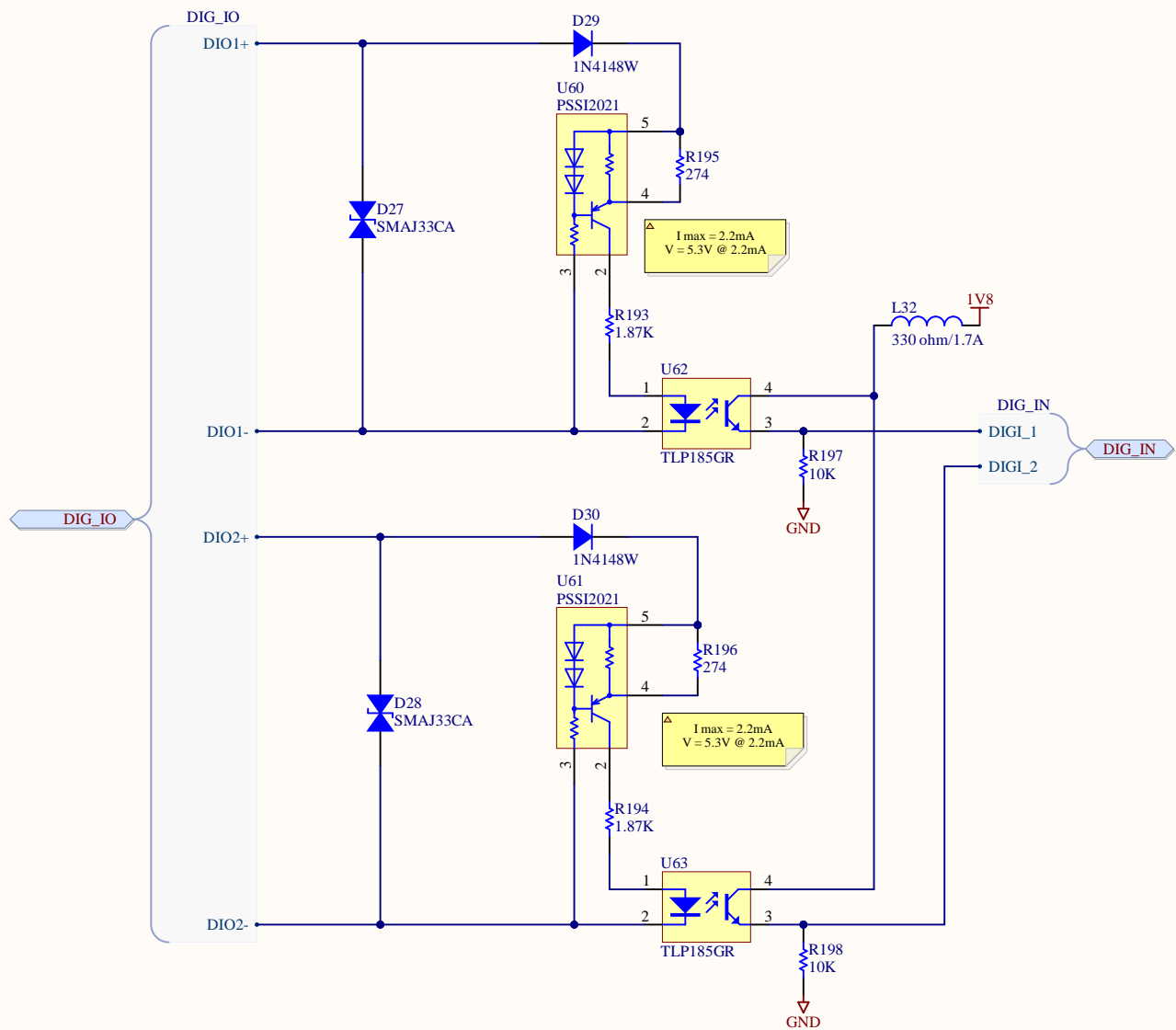
Toradex Solutions Inc.  
6415 Northwest Drive  
Mississauga, ON, L4V 1X1  
Canada







| CONTROL INPUTS <sup>(1)</sup> |      |      | Signal Direction |  | Bits 5:8       |
|-------------------------------|------|------|------------------|--|----------------|
| OE                            | DIR1 | DIR2 | Bits 1:4         |  | Disabled (H-Z) |
| H                             | X    | X    | B to A           |  | B to A         |
| L                             | L    | L    | B to A           |  | A to B         |
| L                             | L    | H    | A to B           |  | A to B         |
| L                             | H    | L    | A to B           |  | B to A         |
| L                             | H    | H    | A to B           |  | B to A         |



Isolated Digital IO

Digital Inputs rating:  
max input voltage +-32V  
+5 to +32V to turn on

