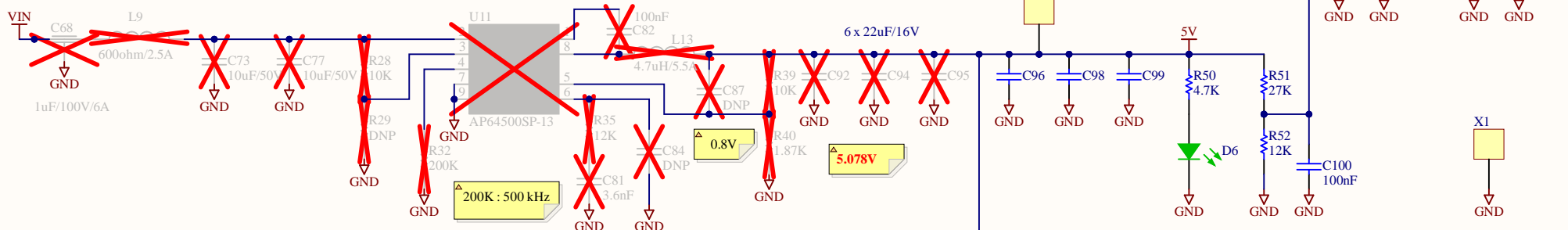
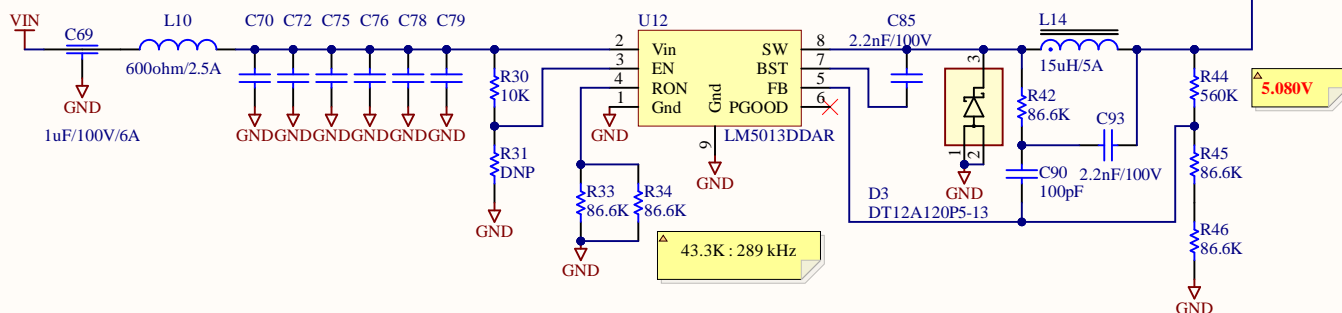


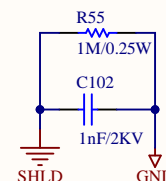
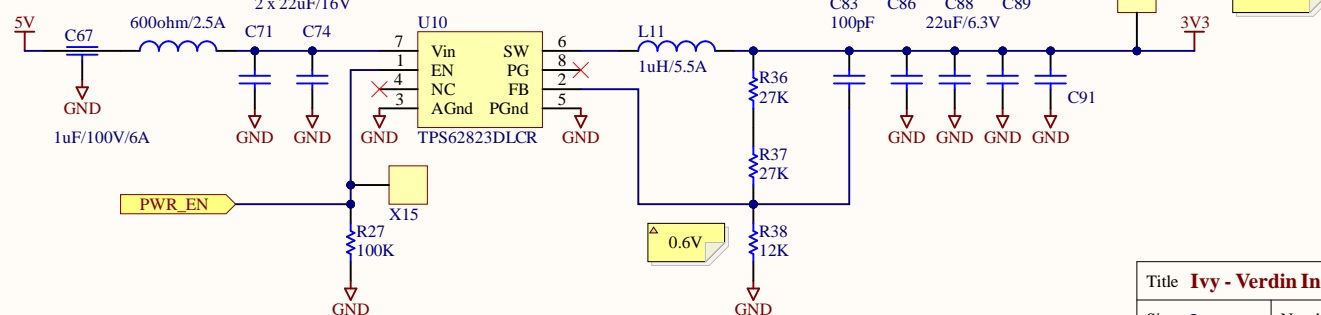
### Step-Down 5V / 3A for Standard Version

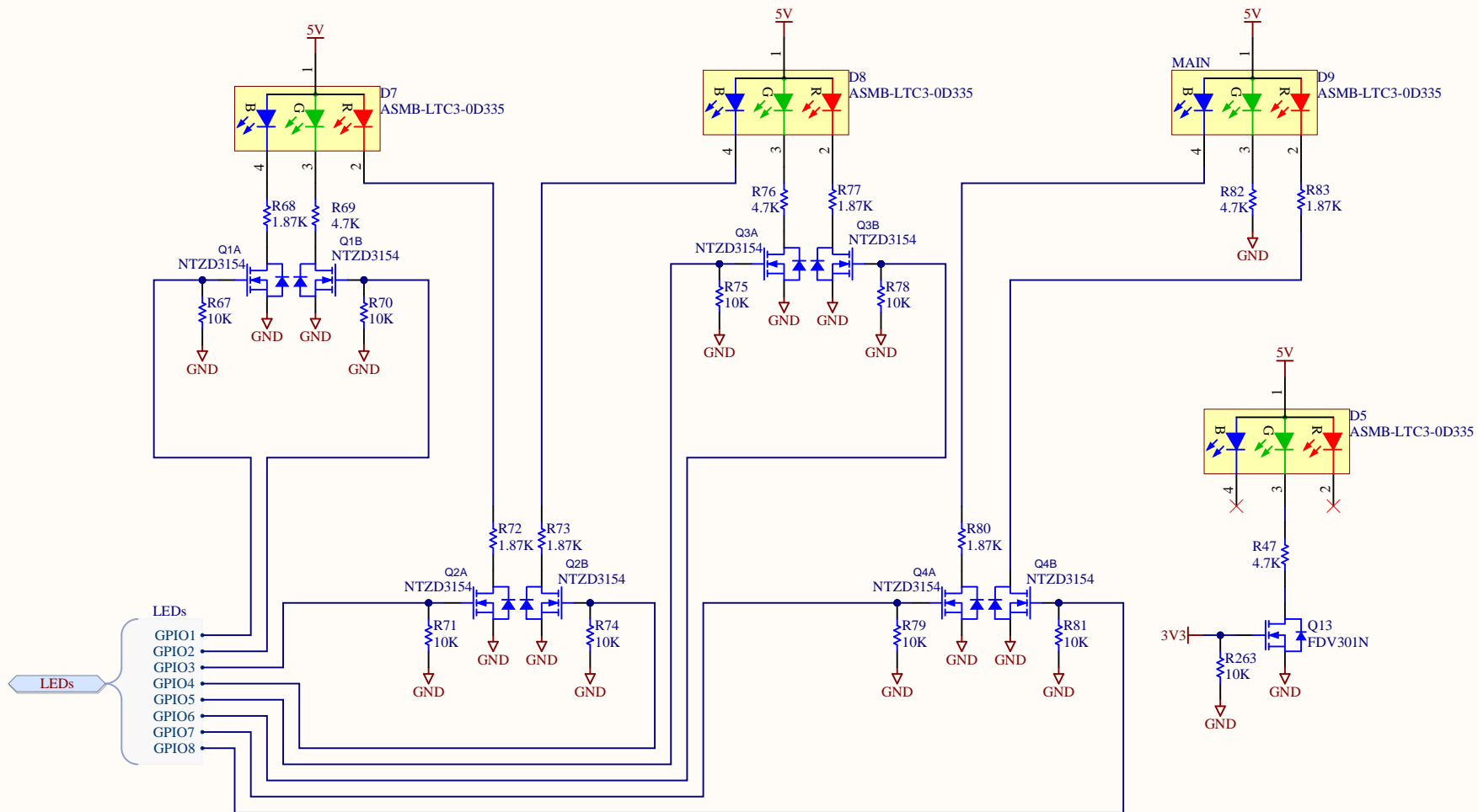


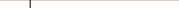
### Step-Down 5V / 3A for Extended Version

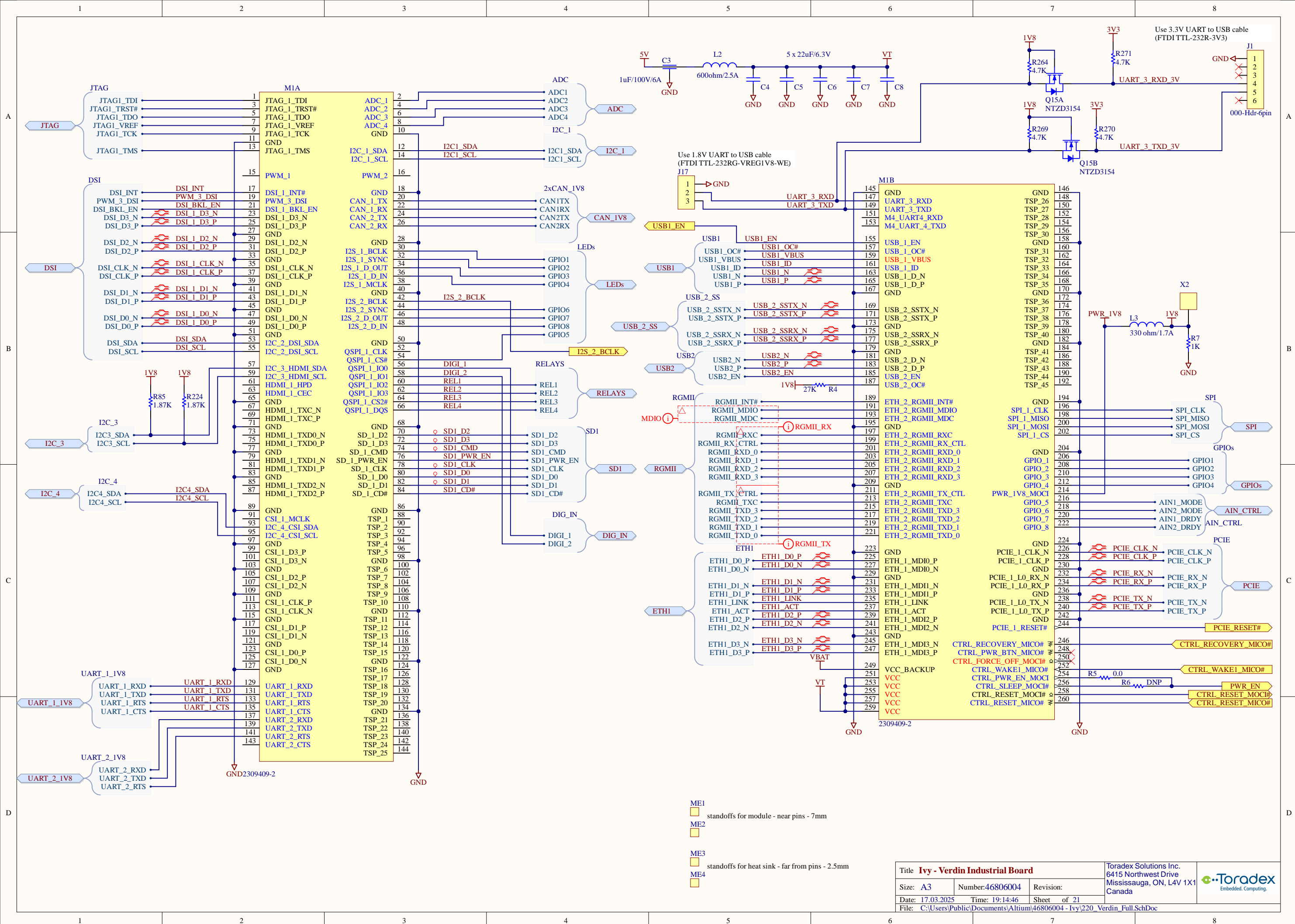


### Step-Down 3.3V / 1A

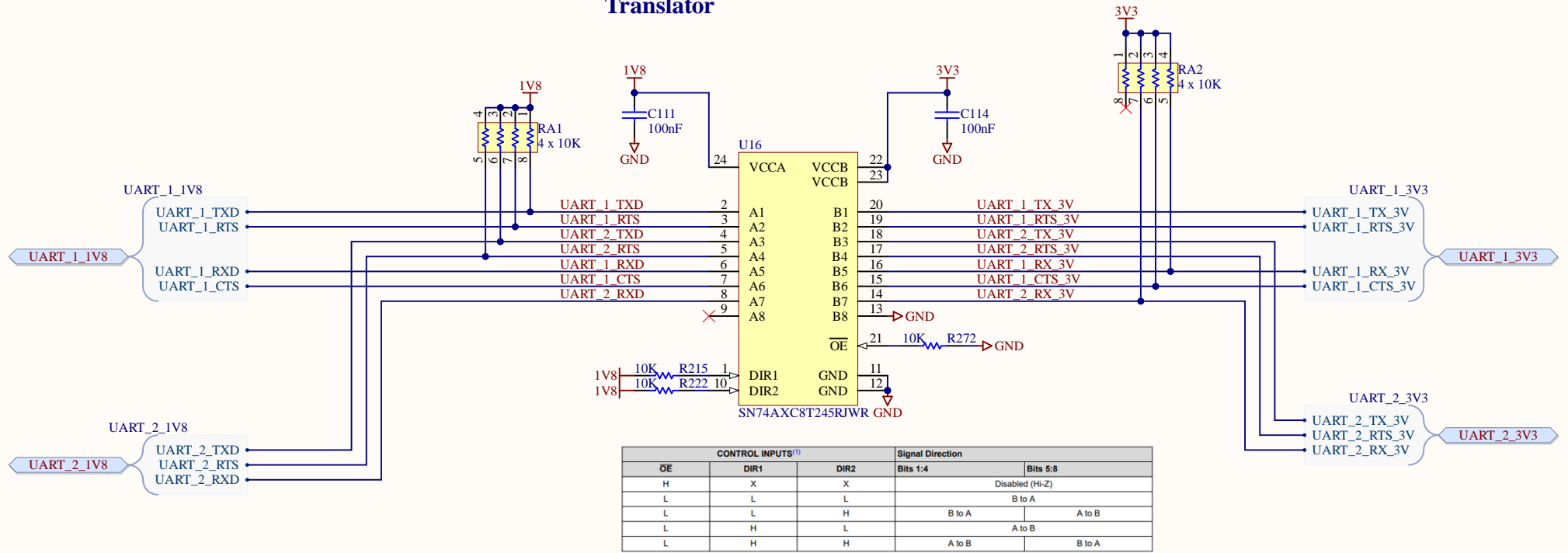




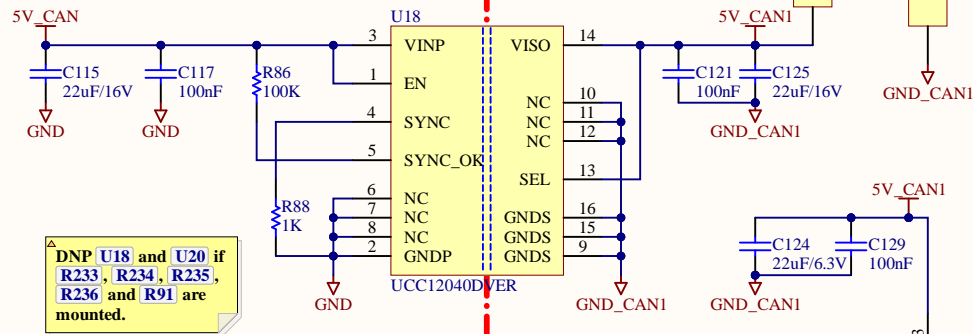
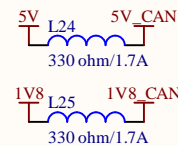
Title <b>Ivy - Verdin Industrial Board</b>			Toradex Solutions Inc. 6415 Northwest Drive Mississauga, ON, L4V 1X1 Canada	
Size: <b>Letter</b>	Number: <b>46806004</b>	Revision:		
Date: <b>17.03.2025</b>	Time: <b>19:14:45</b>	Sheet of <b>21</b>		
File: <b>150_Status_LEDs.SchDoc</b>				



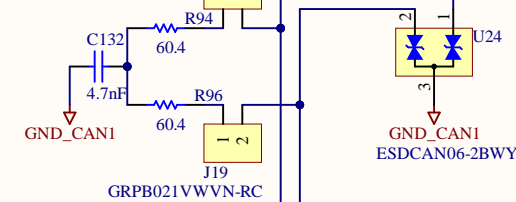
# Translator



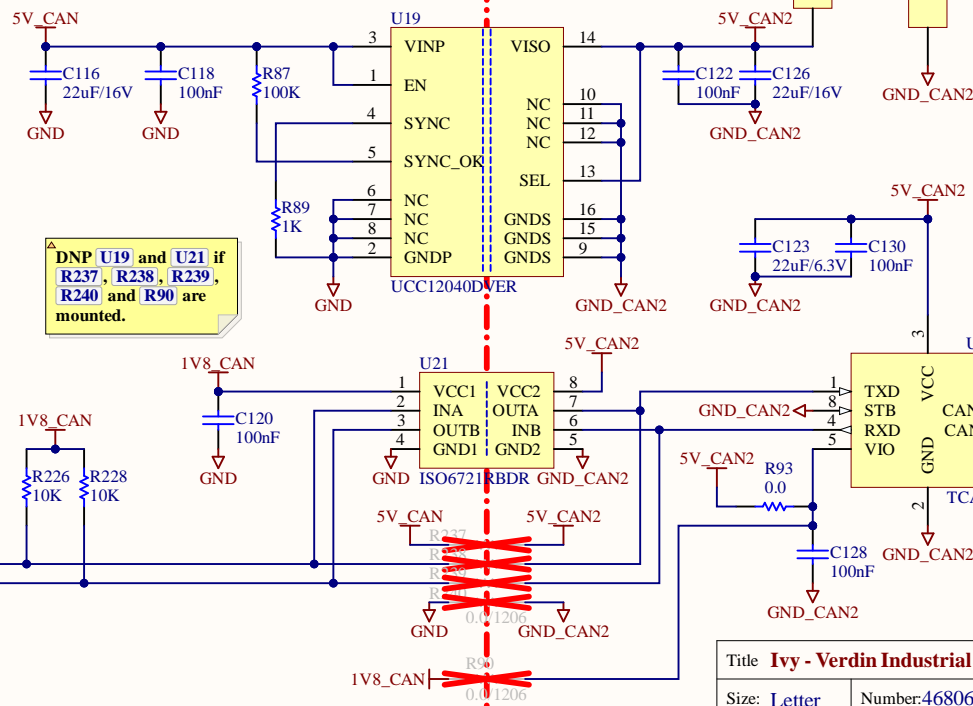
## CAN Transceiver #1



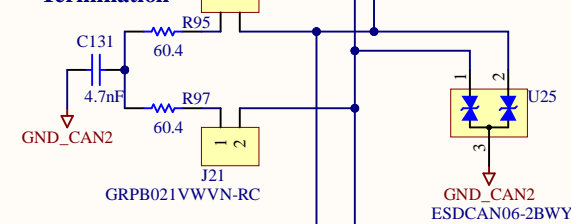
## Termination



## CAN Transceiver #2



## Termination



Field Isolation 1

Field Isolation 2

Field Isolation 2

Title Ivy - Verdin Industrial Board

Size: Letter Number: 46806004

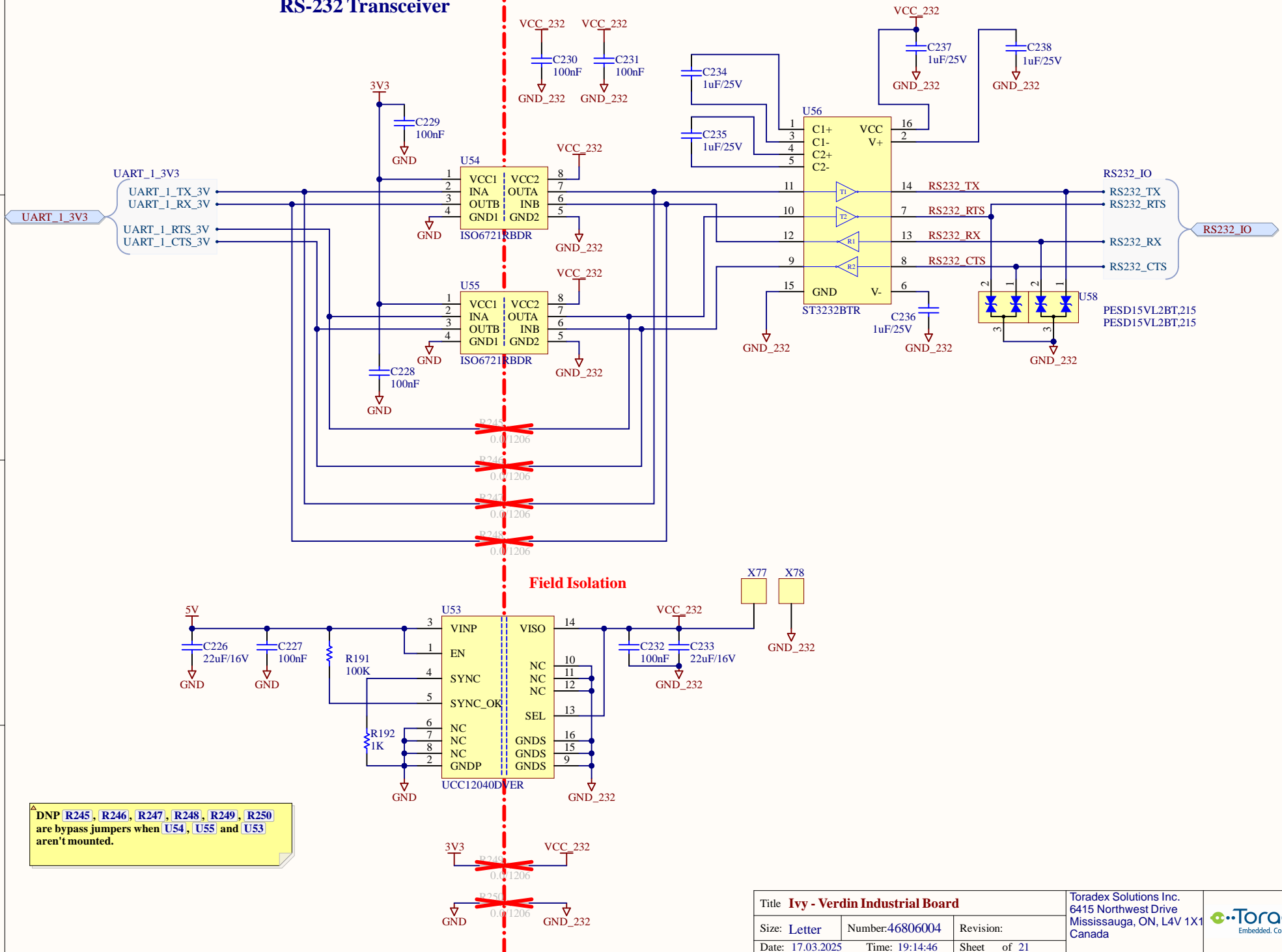
Date: 17.03.2025 Time: 19:14:46

File: 300\_CAN\_Transceivers.SchDoc

Toradex Solutions Inc.  
6415 Northwest Drive  
Mississauga, ON, L4V 1X1  
Canada



## RS-232 Transceiver



Title **Ivy - Verdin Industrial Board**

Size: **Letter**

Number: **46806004**

Revision:

Date: **17.03.2025**

Time: **19:14:46**

Sheet of **21**

File: **320\_RS-232.SchDoc**

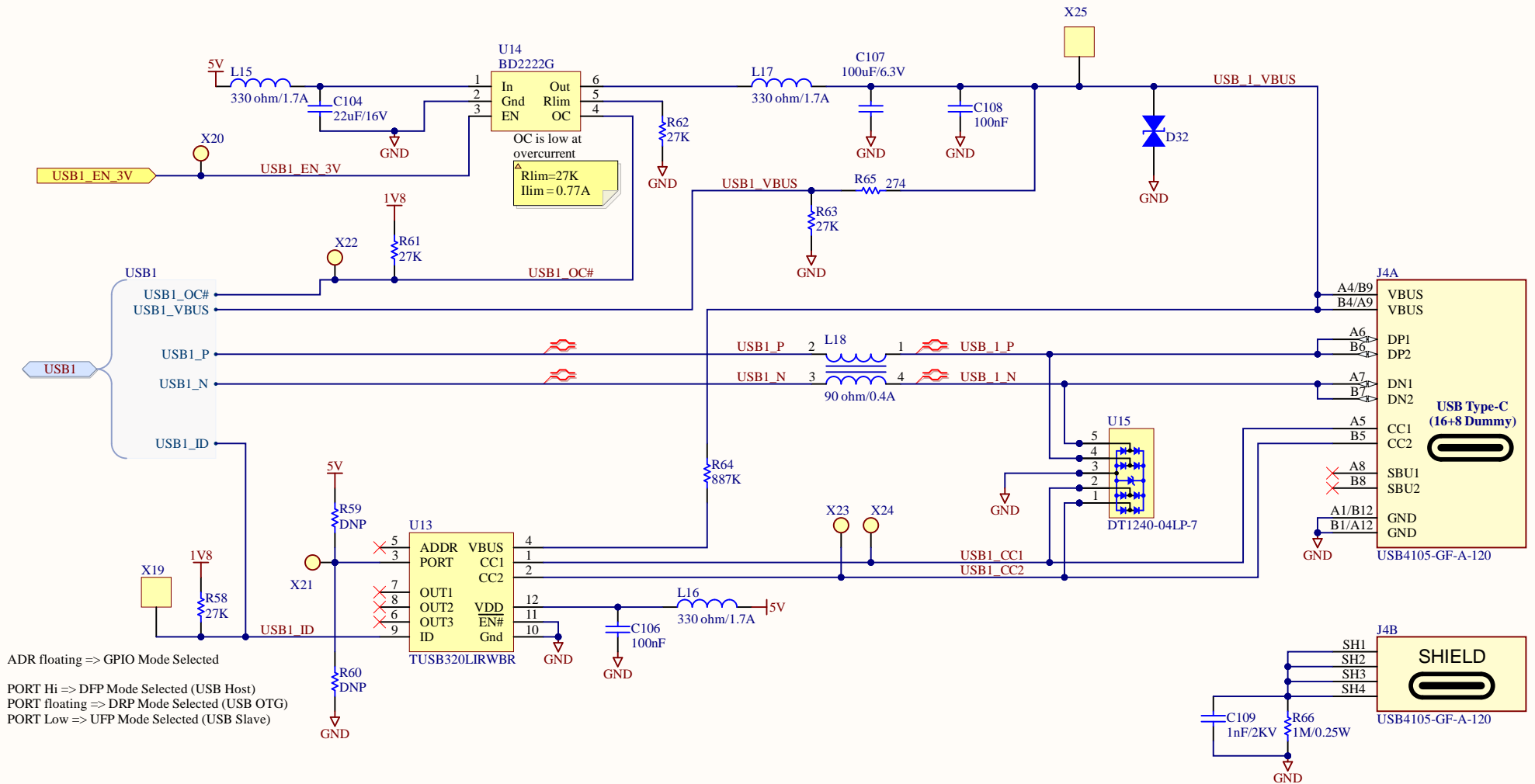
Toradex Solutions Inc.  
6415 Northwest Drive  
Mississauga, ON, L4V 1X1  
Canada






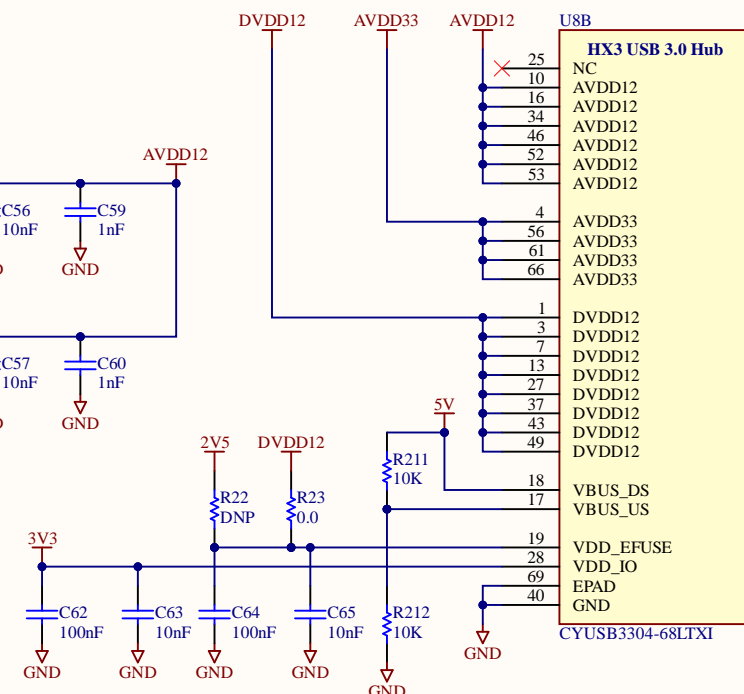
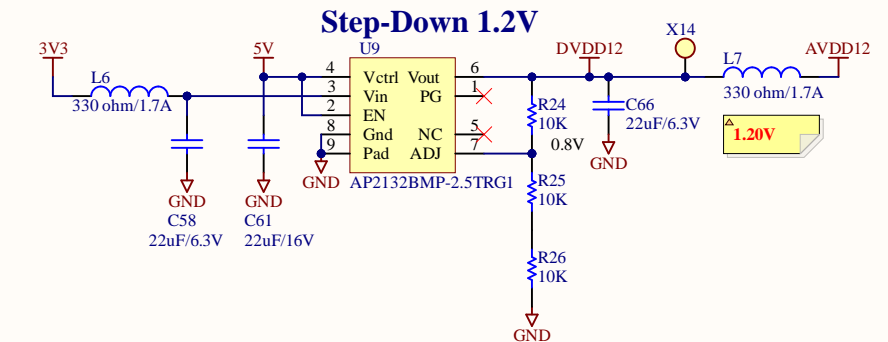
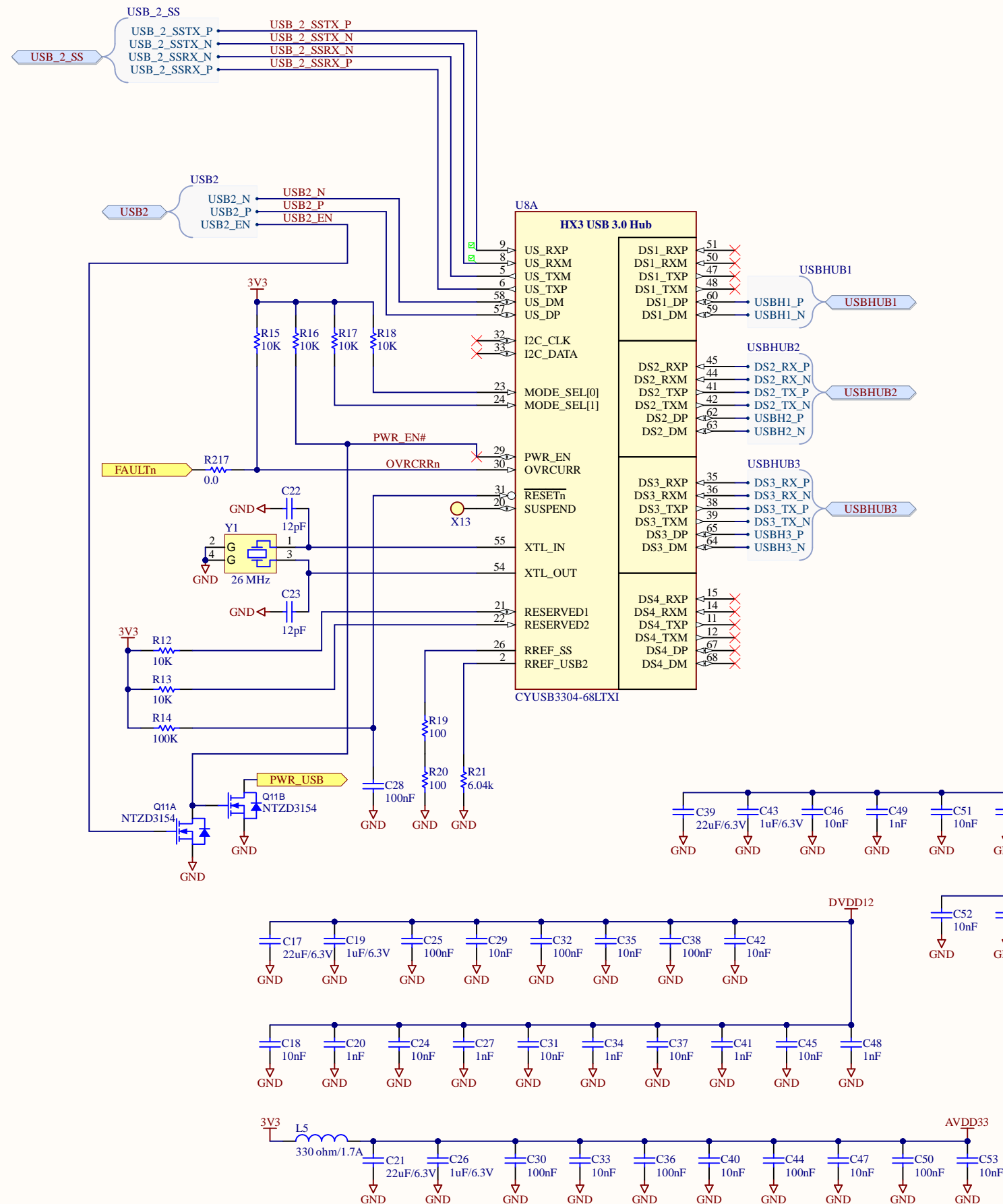



## USB1 - OTG



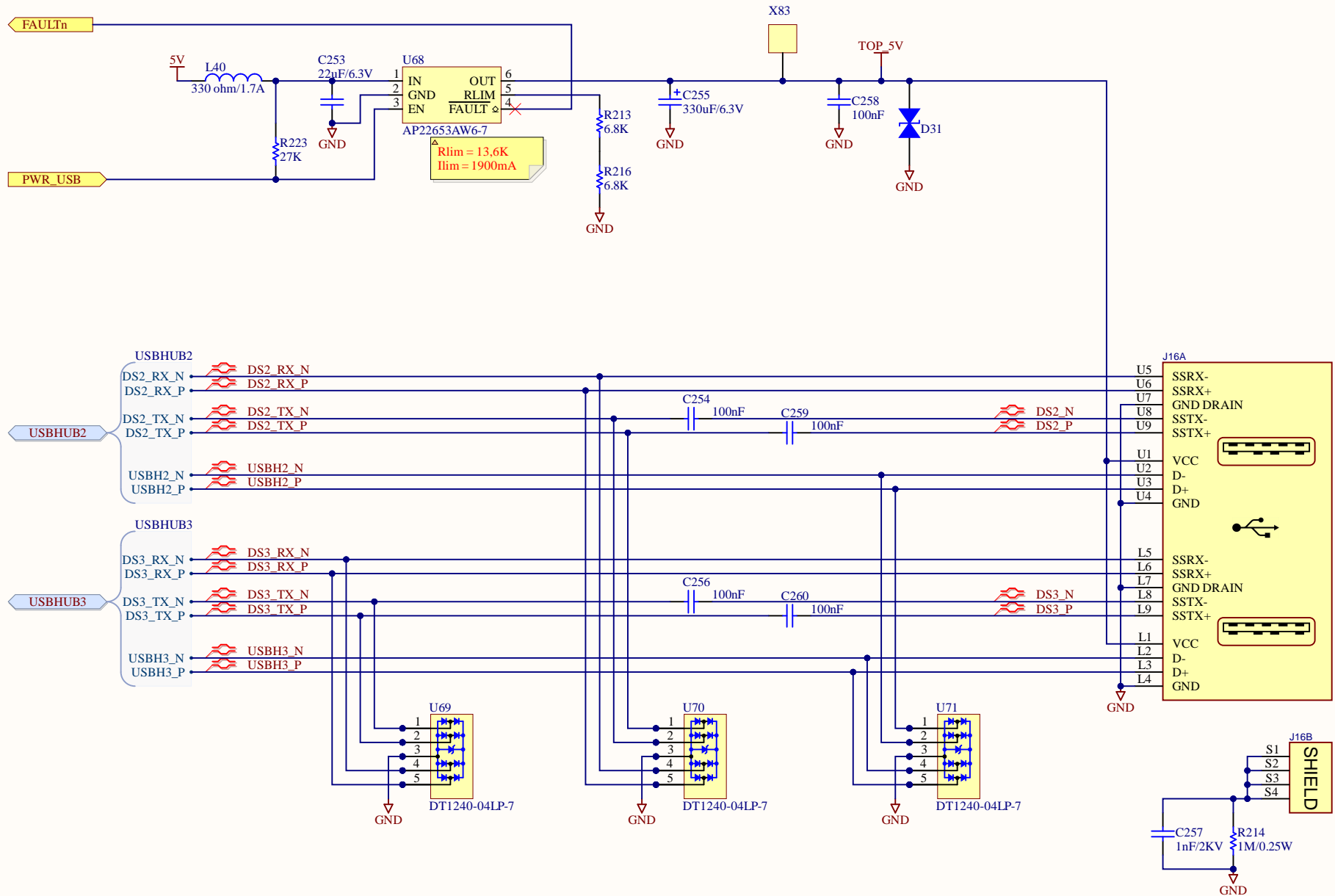
Title <b>Ivy - Verdin Industrial Board</b>			Toradex Solutions Inc. 6415 Northwest Drive Mississauga, ON, L4V 1X1 Canada	 Embedded. Computing.
Size: <b>Letter</b>	Number: <b>46806004</b>	Revision:		
Date: <b>17.03.2025</b>	Time: <b>19:14:46</b>	Sheet of <b>21</b>		
File: <b>400_USB1_OTG.SchDoc</b>				

## USB Hub



Title <b>Ivy - Verdin Industrial Board</b>			Toradex Solutions Inc. 6415 Northwest Drive Mississauga, ON, L4V 1X1 Canada	 Embedded. Computing.
Size: <b>A3</b>	Number: <b>46806004</b>	Revision:		
Date: <b>17.03.2025</b>	Time: <b>19:14:46</b>	Sheet of <b>21</b>		
File: <b>C:\Users\Public\Documents\Altium\46806004 - Ivy\500_USB_Hub_SchDoc</b>				

## 2x USB Type-A Host Connectors



Title **Ivy - Verdin Industrial Board**

Size: Letter

Number: 46806004

Revision:

Date: 17.03.2025

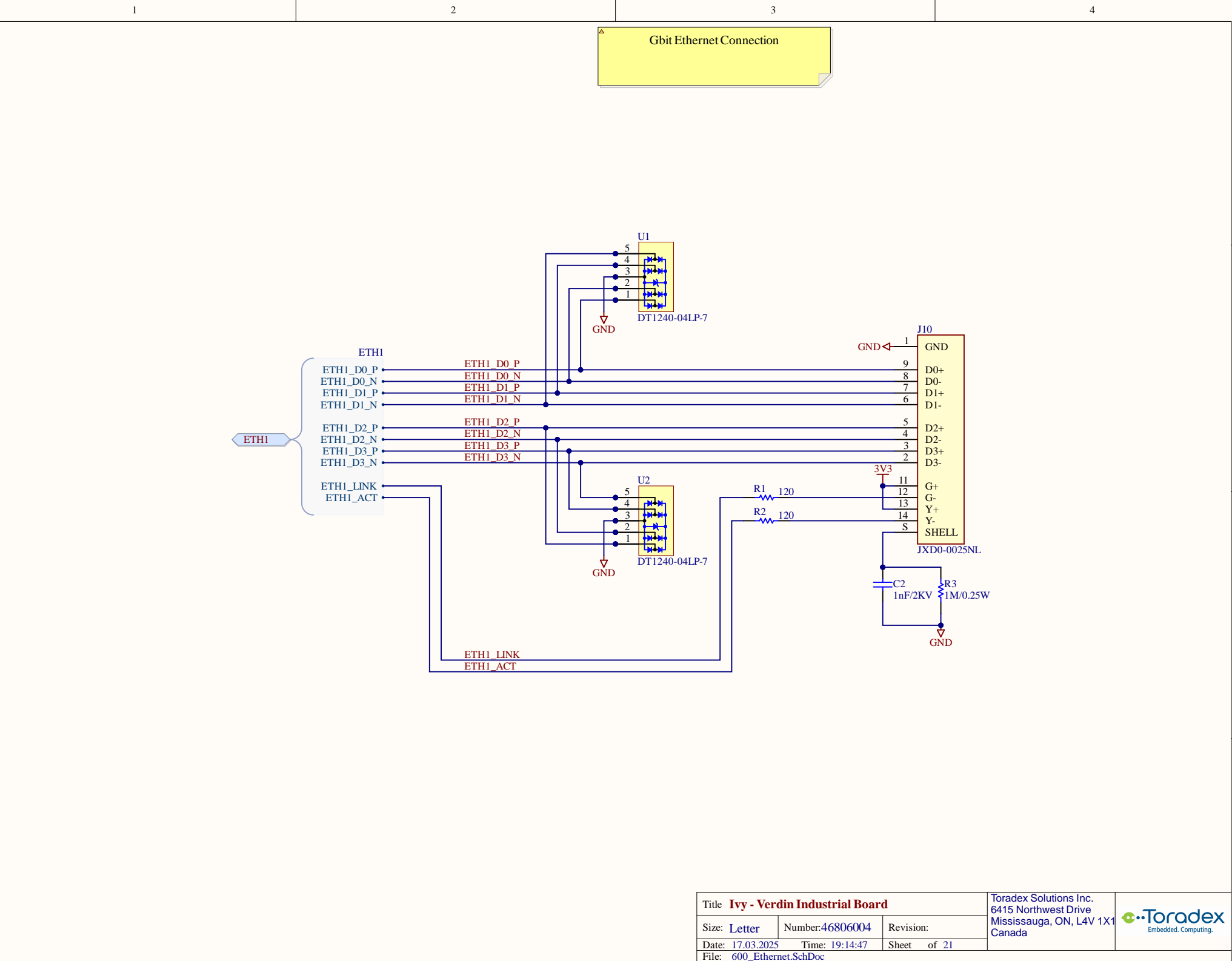
Time: 19:14:47

Sheet of 21

File: 510\_USB\_Type\_A\_Conn.SchDoc

Toradex Solutions Inc.  
6415 Northwest Drive  
Mississauga, ON, L4V 1X1  
Canada





Title **Ivy - Verdin Industrial Board**

Size: Letter

Number: 46806004

Revision:

Date: 17.03.2025

Time: 19:14:47

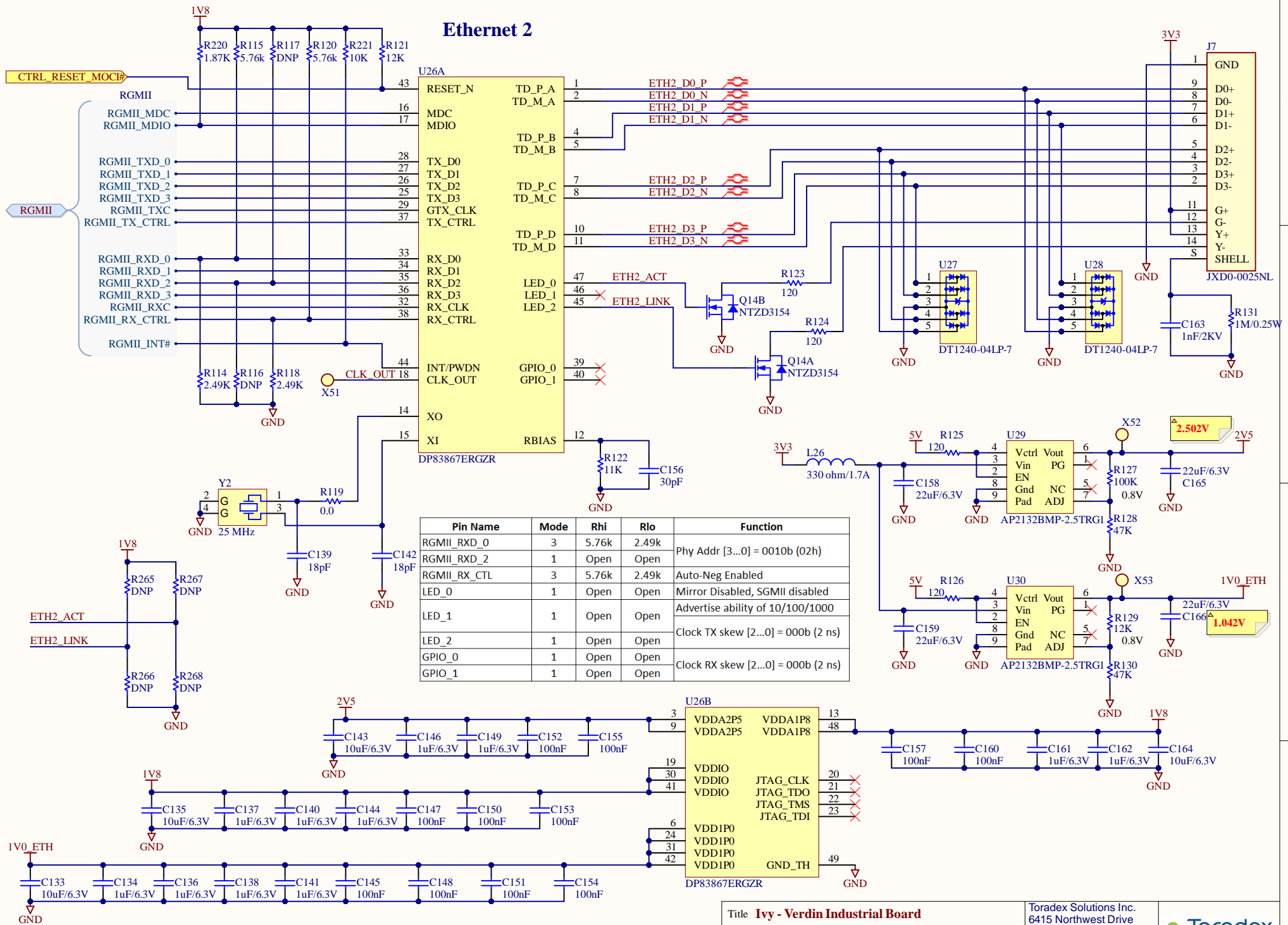
Sheet of 21

File: 600\_Ethernet.SchDoc

Toradex Solutions Inc.  
6415 Northwest Drive  
Mississauga, ON, L4V 1X1  
Canada



# Ethernet 2



Title **Ivy - Verdin Industrial Board**

Size: **Letter**

Number: **46806004**

Revision:

Date: **17.03.2025**

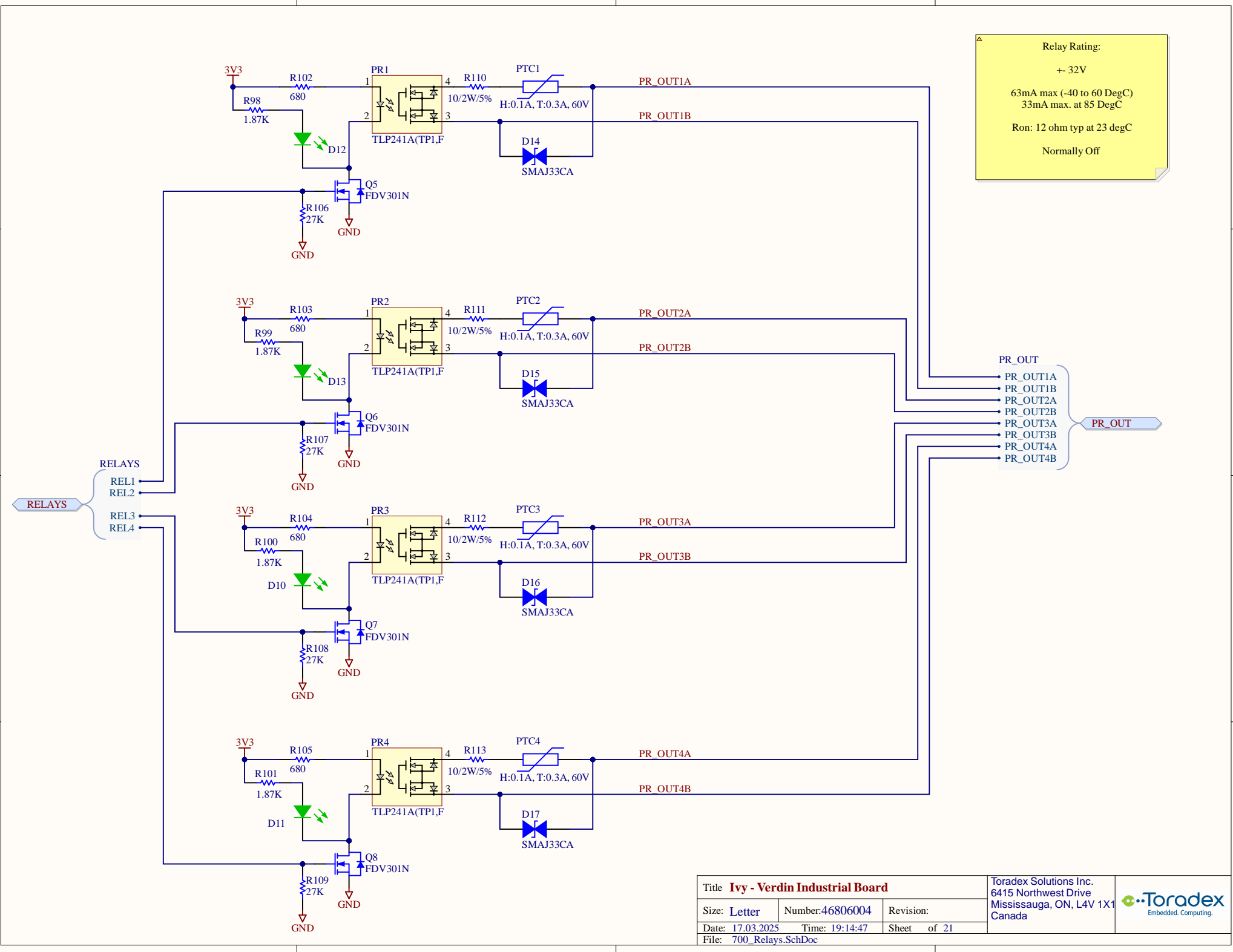
Time: **19:14:47**

Sheet of **21**


File: **620\_Ethernet2.SchDoc**

Toradex Solutions Inc.  
6415 Northwest Drive  
Mississauga, ON, L4V 1X1  
Canada





Relay Rating:  
+/- 32V  
63mA max (-40 to 60 DegC)  
33mA max. at 85 DegC  
Ron: 12 ohm typ at 23 degC  
Normally Off

Title <b>Ivy - Verdin Industrial Board</b>			Toradex Solutions Inc. 6415 Northwest Drive Mississauga, ON, L4V 1X1 Canada	
Size: <b>Letter</b>	Number: <b>46806004</b>	Revision:		
Date: <b>17.03.2025</b>	Time: <b>19:14:47</b>	Sheet of <b>21</b>		
File: <b>700_Relays.SchDoc</b>				

A

A

B

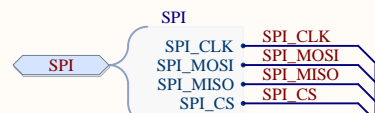
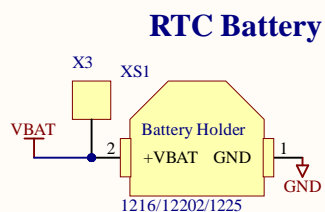
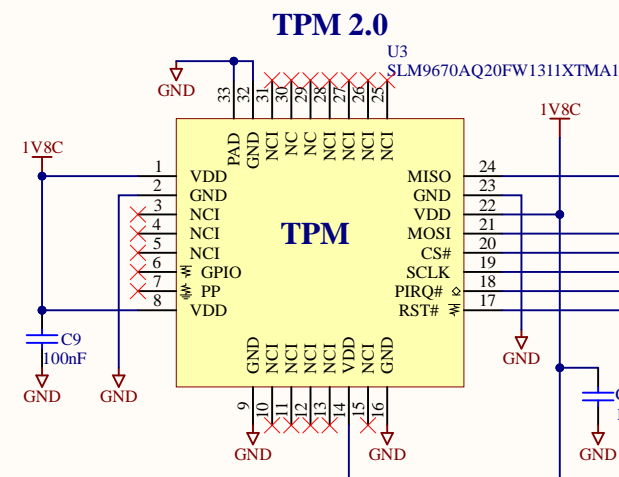
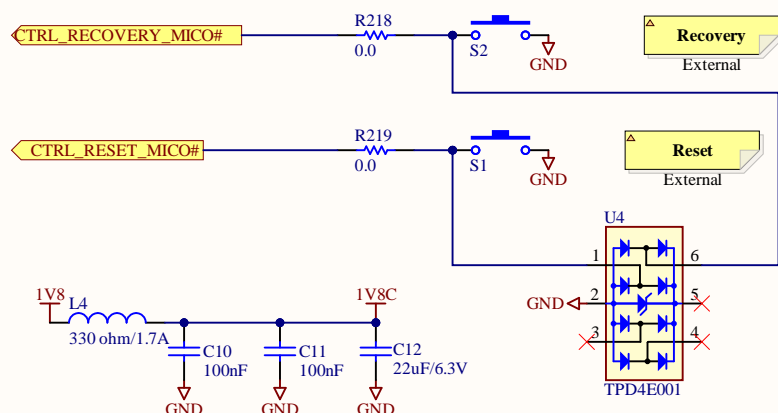
B

C

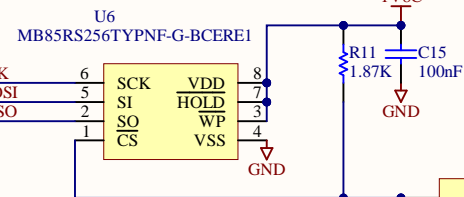
C

D

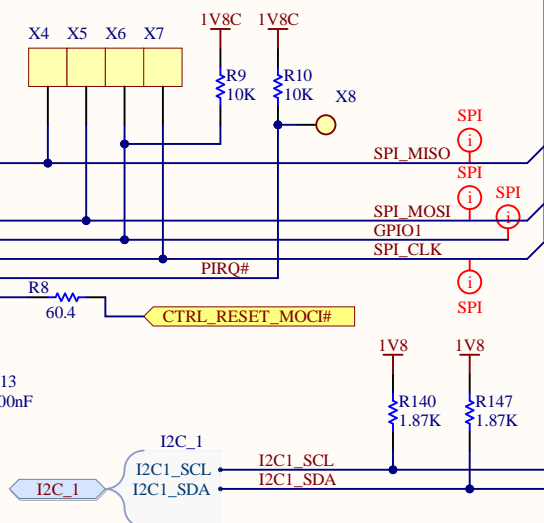
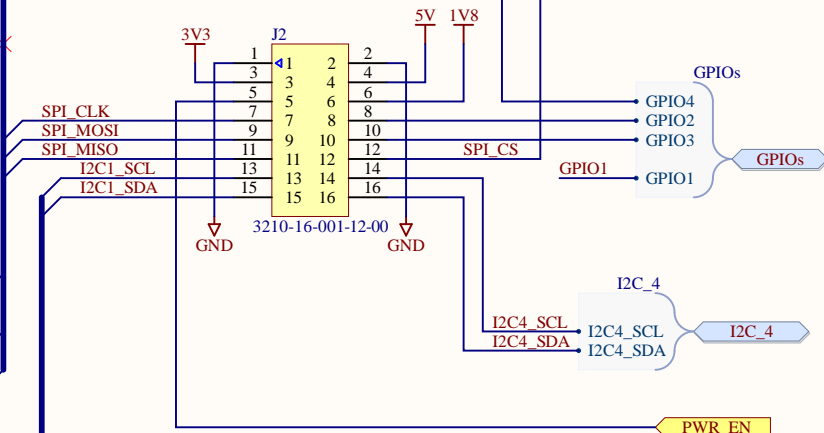
D



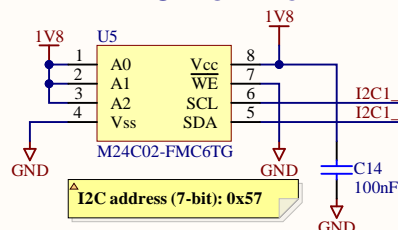
## FRAM 32K x 8



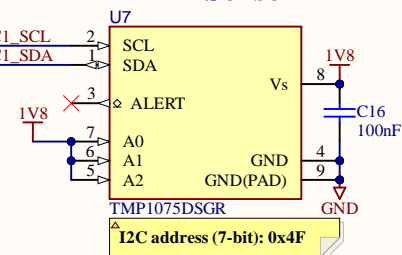
## Extension Connector



## EEPROM 32Kx8



## TEMP Sensor



Title **Ivy - Verdin Industrial Board**

Size: **Letter**

Number: **46806004**

Revision:

Date: **17.03.2025**

Time: **19:14:47**

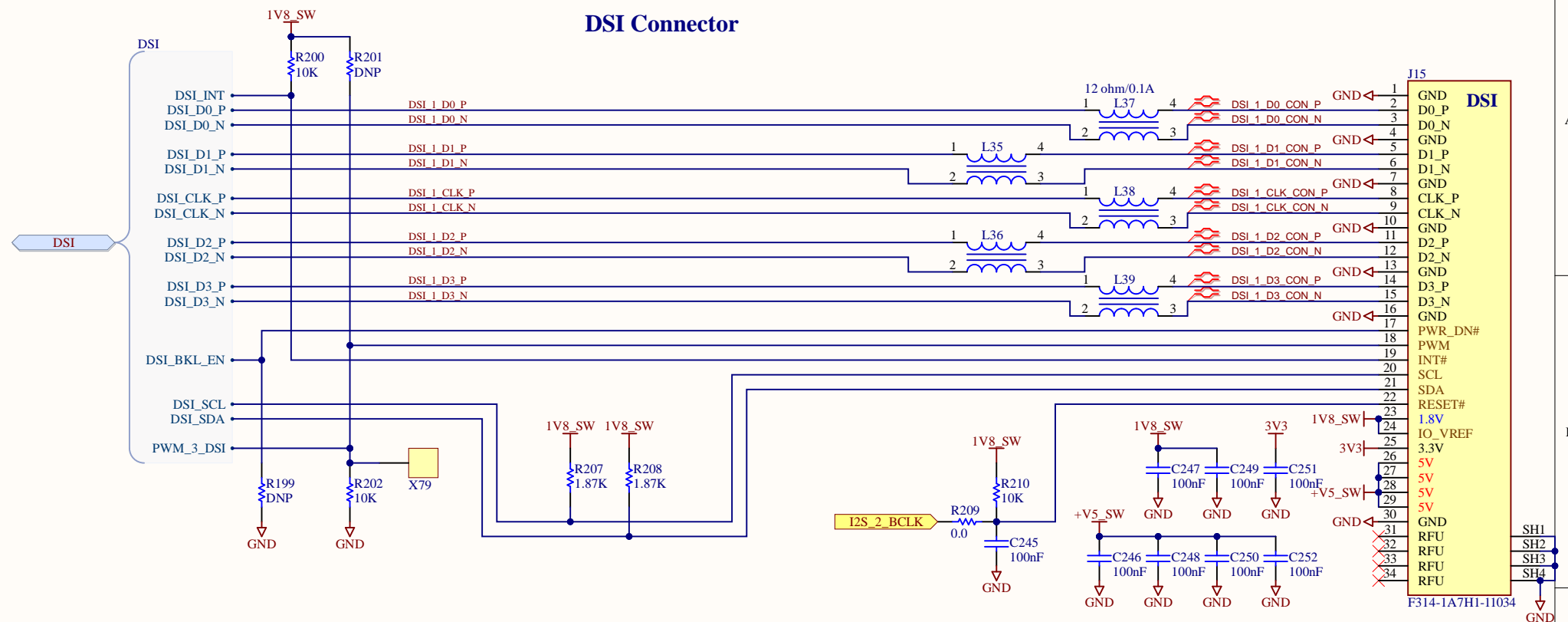
Sheet of **21**

File: **800\_Peripherals.SchDoc**

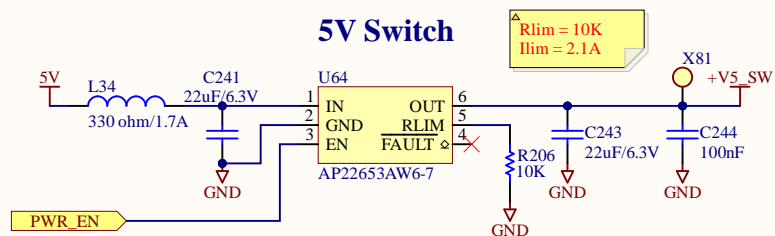
Toradex Solutions Inc.  
6415 Northwest Drive  
Mississauga, ON, L4V 1X1  
Canada



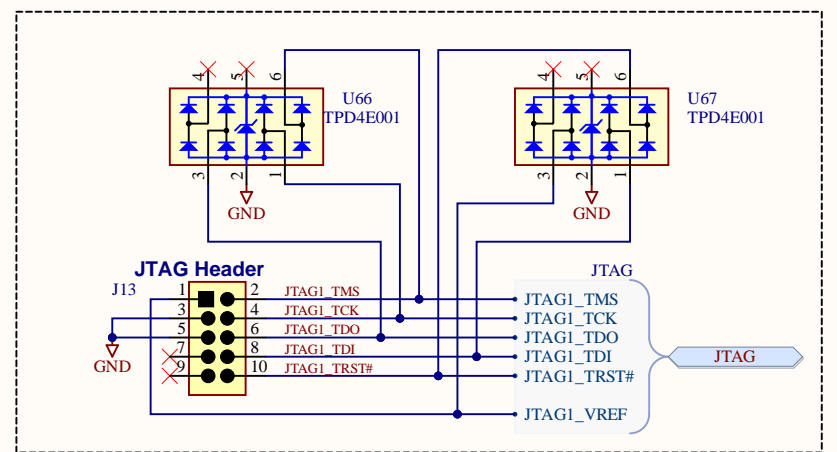
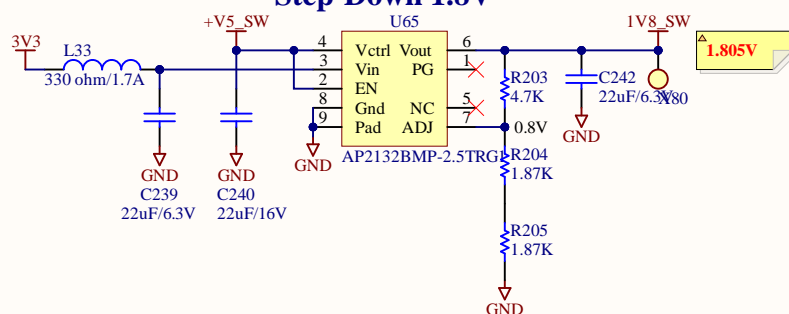
## DSI Connector



## 5V Switch



## Step-Down 1.8V



Title Ivy - Verdin Industrial Board

Size: Letter

Number: 46806004

Revision:

Date: 17.03.2025

Time: 19:14:47

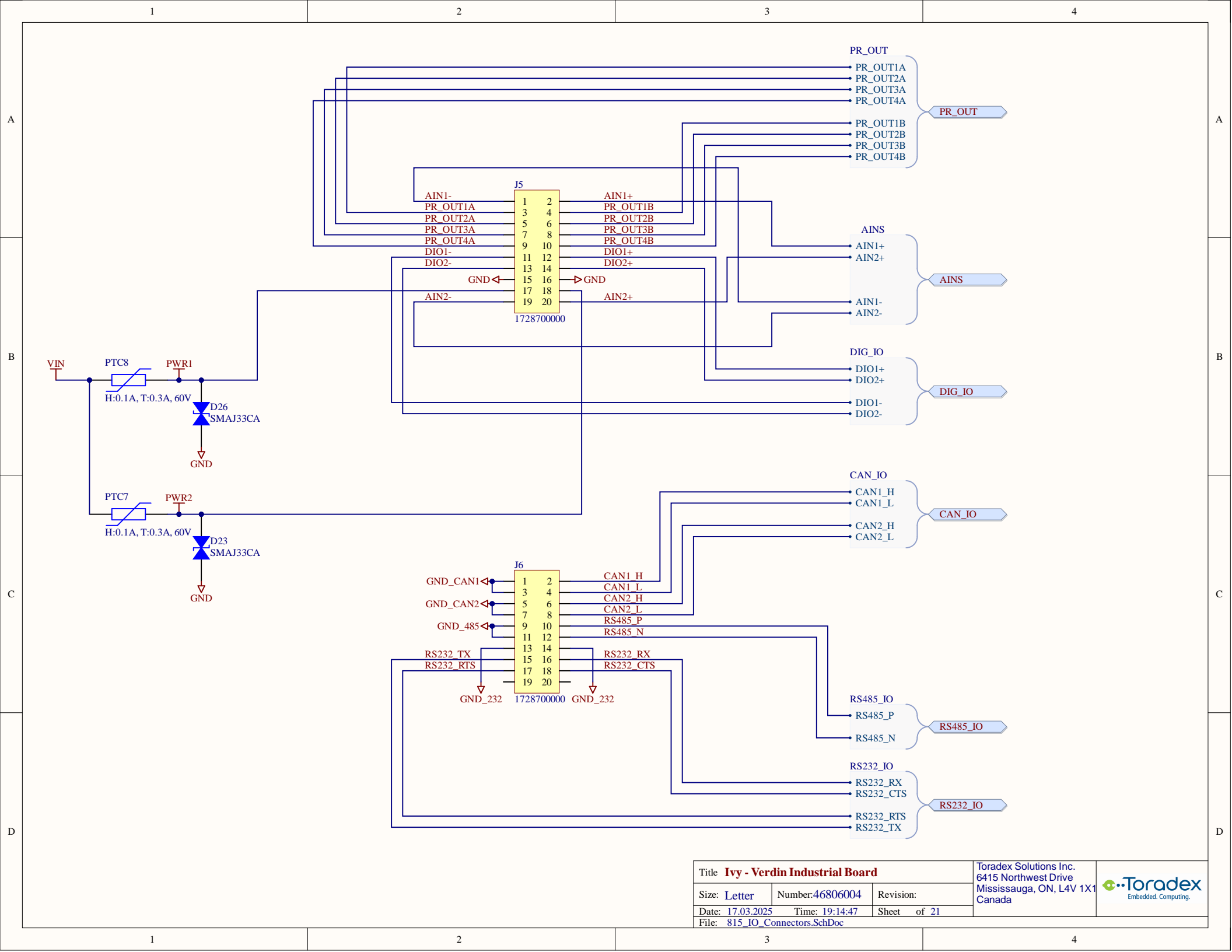
Sheet of 21

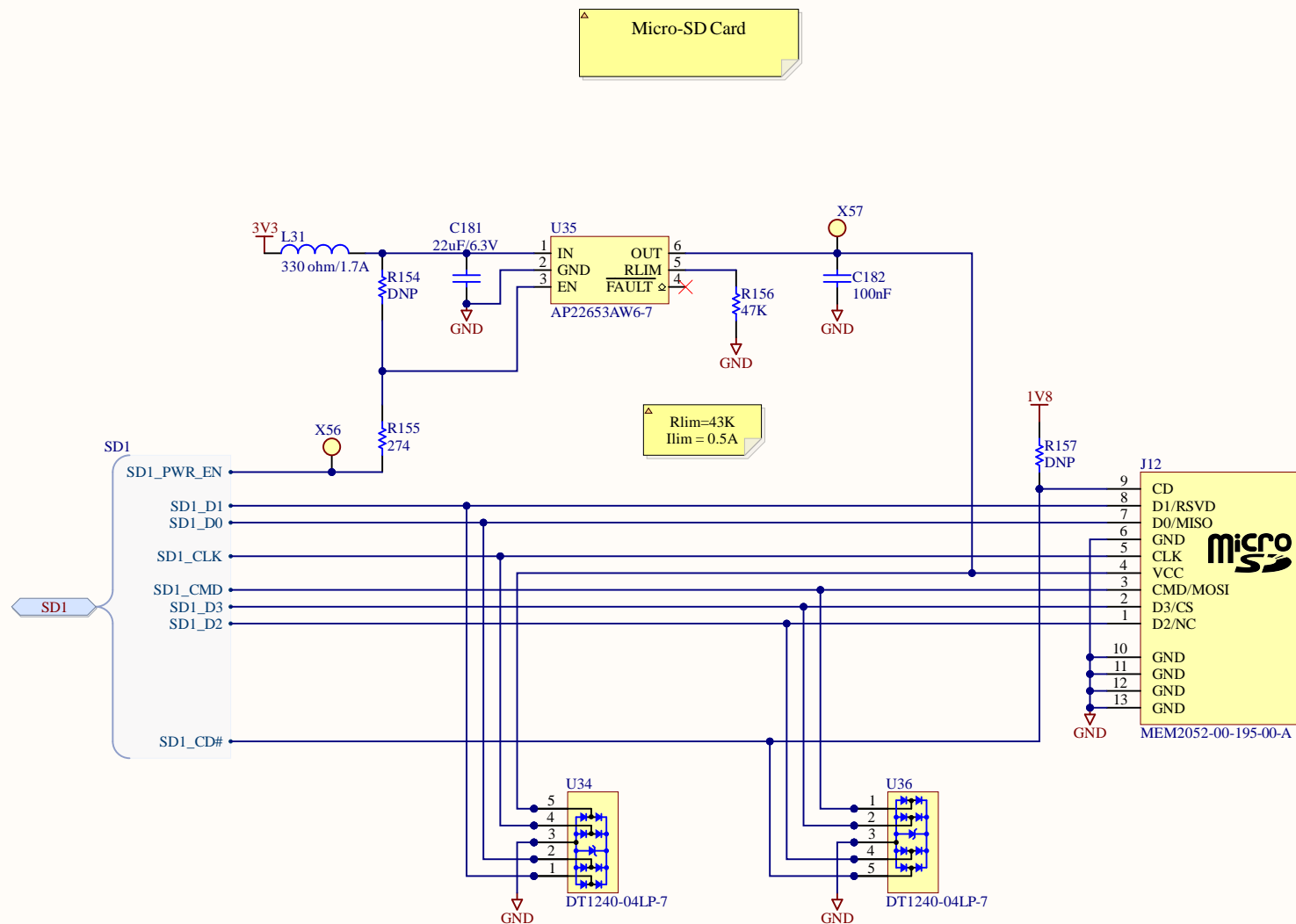
File: 810\_AUX\_Connectors.SchDoc

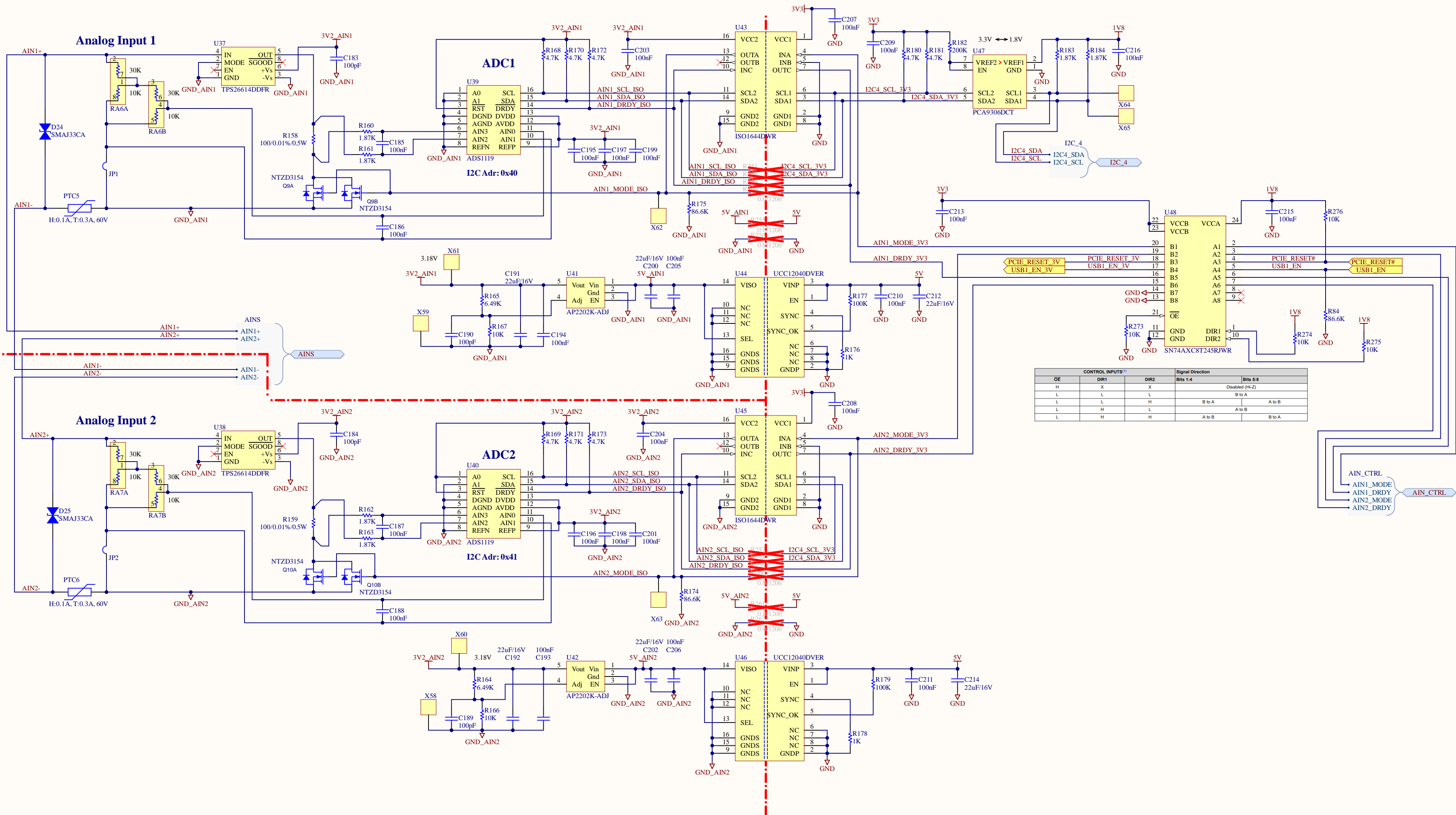
Toradex Solutions Inc.  
6415 Northwest Drive  
Mississauga, ON, L4V 1X1  
Canada



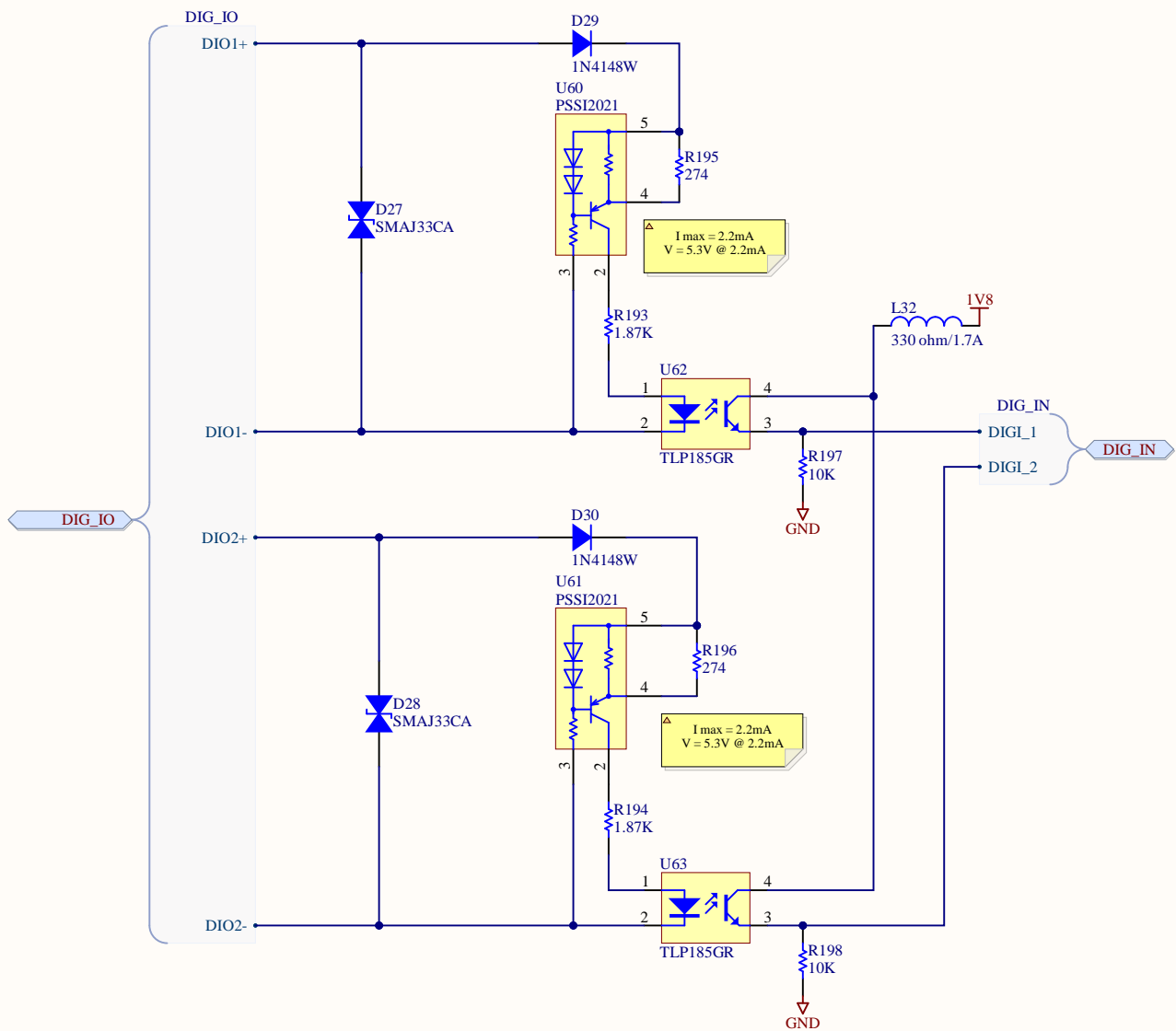








CONTROL INPUTS <sup>(1)</sup>			Signal Direction		Bits 5:8
OE	DIR1	DIR2	Bits 1:4		Disabled (H-Z)
H	X	X	B to A		B to A
L	L	L	A to B		A to B
L	L	H	B to A		A to B
L	H	L	A to B		B to A
L	H	H	A to B		B to A



Isolated Digital IO

Digital Inputs rating:  
max input voltage +-32V  
+5 to +32V to turn on

