

This is a detailed schematic diagram of a PCB layout. The diagram shows a variety of components and their reference designators, including:

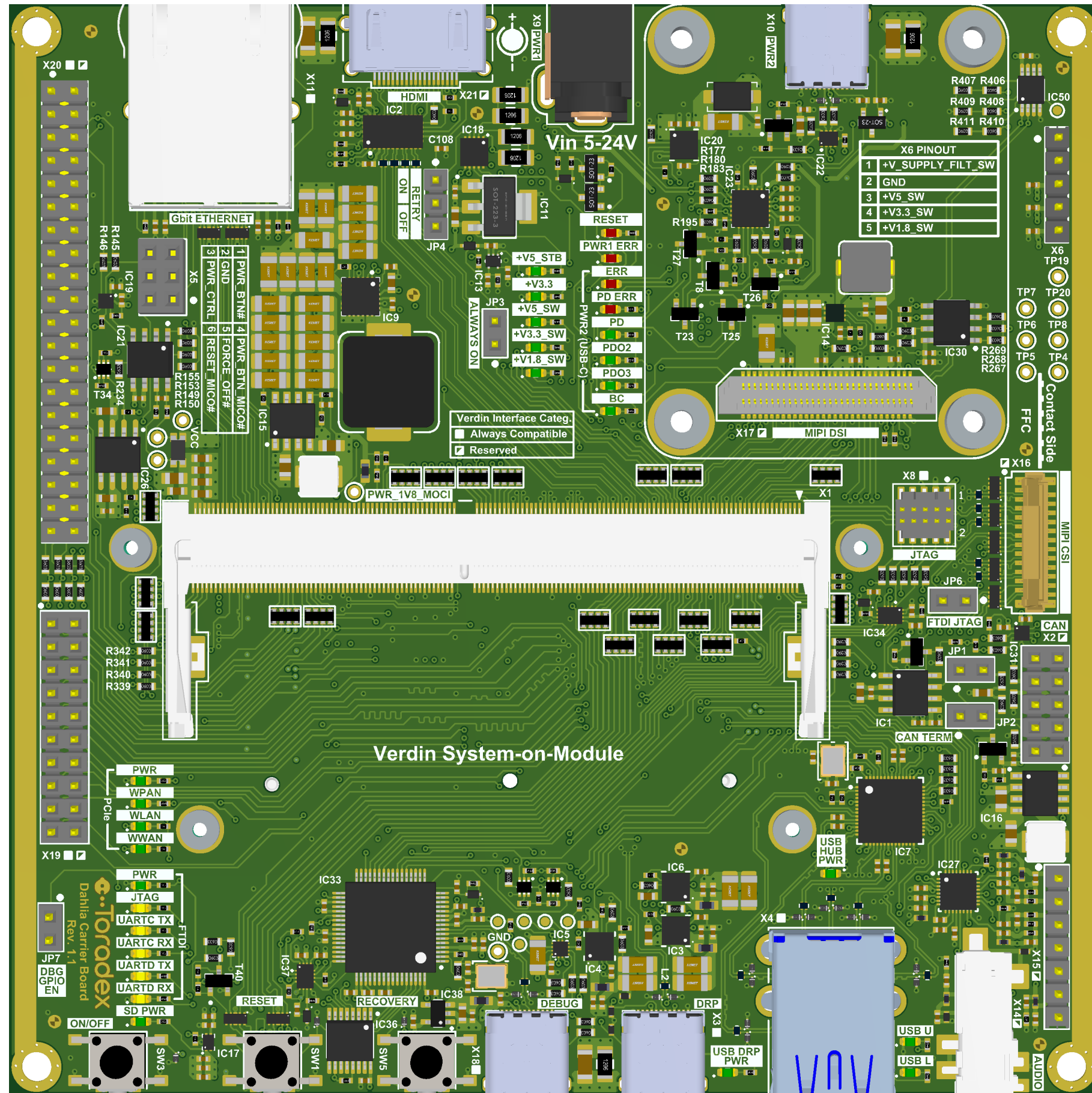
- ICs:** IC1, IC2, IC3, IC4, IC5, IC6, IC7, IC8, IC9, IC10, IC11, IC12, IC13, IC14, IC15, IC16, IC17, IC18, IC19, IC20, IC21, IC22, IC23, IC24, IC25, IC26, IC27, IC28, IC29, IC30, IC31, IC32, IC33, IC34, IC35, IC36, IC37, IC38, IC39, IC40, IC41, IC42, IC43, IC44, IC45, IC46, IC47, IC48, IC49, IC50, IC51, IC52, IC53, IC54, IC55, IC56, IC57, IC58, IC59, IC60, IC61, IC62, IC63, IC64, IC65, IC66, IC67, IC68, IC69, IC70, IC71, IC72, IC73, IC74, IC75, IC76, IC77, IC78, IC79, IC80, IC81, IC82, IC83, IC84, IC85, IC86, IC87, IC88, IC89, IC90, IC91, IC92, IC93, IC94, IC95, IC96, IC97, IC98, IC99, IC100.
- Resistors:** R1, R2, R3, R4, R5, R6, R7, R8, R9, R10, R11, R12, R13, R14, R15, R16, R17, R18, R19, R20, R21, R22, R23, R24, R25, R26, R27, R28, R29, R30, R31, R32, R33, R34, R35, R36, R37, R38, R39, R40, R41, R42, R43, R44, R45, R46, R47, R48, R49, R50, R51, R52, R53, R54, R55, R56, R57, R58, R59, R60, R61, R62, R63, R64, R65, R66, R67, R68, R69, R70, R71, R72, R73, R74, R75, R76, R77, R78, R79, R80, R81, R82, R83, R84, R85, R86, R87, R88, R89, R90, R91, R92, R93, R94, R95, R96, R97, R98, R99, R100.
- Capacitors:** C1, C2, C3, C4, C5, C6, C7, C8, C9, C10, C11, C12, C13, C14, C15, C16, C17, C18, C19, C20, C21, C22, C23, C24, C25, C26, C27, C28, C29, C30, C31, C32, C33, C34, C35, C36, C37, C38, C39, C40, C41, C42, C43, C44, C45, C46, C47, C48, C49, C50, C51, C52, C53, C54, C55, C56, C57, C58, C59, C60, C61, C62, C63, C64, C65, C66, C67, C68, C69, C70, C71, C72, C73, C74, C75, C76, C77, C78, C79, C80, C81, C82, C83, C84, C85, C86, C87, C88, C89, C90, C91, C92, C93, C94, C95, C96, C97, C98, C99, C100.
- Connectors:** JP1, JP2, JP3, JP4, JP5, JP6, JP7, JP8, JP9, JP10, JP11, JP12, JP13, JP14, JP15, JP16, JP17, JP18, JP19, JP20, JP21, JP22, JP23, JP24, JP25, JP26, JP27, JP28, JP29, JP30, JP31, JP32, JP33, JP34, JP35, JP36, JP37, JP38, JP39, JP40, JP41, JP42, JP43, JP44, JP45, JP46, JP47, JP48, JP49, JP50, JP51, JP52, JP53, JP54, JP55, JP56, JP57, JP58, JP59, JP60, JP61, JP62, JP63, JP64, JP65, JP66, JP67, JP68, JP69, JP70, JP71, JP72, JP73, JP74, JP75, JP76, JP77, JP78, JP79, JP80, JP81, JP82, JP83, JP84, JP85, JP86, JP87, JP88, JP89, JP90, JP91, JP92, JP93, JP94, JP95, JP96, JP97, JP98, JP99, JP100.
- Other components:** MECH1, MECH2, MECH3, MECH4, MECH5, MECH6, MECH7, MECH8, MECH9, MECH10, MECH11, MECH12, MECH13, MECH14, MECH15, MECH16, MECH17, MECH18, MECH19, MECH20, MECH21, MECH22, MECH23, MECH24, MECH25, MECH26, MECH27, MECH28, MECH29, MECH30, MECH31, MECH32, MECH33, MECH34, MECH35, MECH36, MECH37, MECH38, MECH39, MECH40, MECH41, MECH42, MECH43, MECH44, MECH45, MECH46, MECH47, MECH48, MECH49, MECH50, MECH51, MECH52, MECH53, MECH54, MECH55, MECH56, MECH57, MECH58, MECH59, MECH60, MECH61, MECH62, MECH63, MECH64, MECH65, MECH66, MECH67, MECH68, MECH69, MECH70, MECH71, MECH72, MECH73, MECH74, MECH75, MECH76, MECH77, MECH78, MECH79, MECH80, MECH81, MECH82, MECH83, MECH84, MECH85, MECH86, MECH87, MECH88, MECH89, MECH90, MECH91, MECH92, MECH93, MECH94, MECH95, MECH96, MECH97, MECH98, MECH99, MECH100.

The diagram also includes a legend for component types and values, such as:

- LED1, LED2, LED3, LED4, LED5, LED6, LED7, LED8, LED9, LED10, LED11, LED12, LED13, LED14, LED15, LED16, LED17, LED18, LED19, LED20, LED21, LED22, LED23, LED24, LED25, LED26, LED27, LED28, LED29, LED30, LED31, LED32, LED33, LED34, LED35, LED36, LED37, LED38, LED39, LED40, LED41, LED42, LED43, LED44, LED45, LED46, LED47, LED48, LED49, LED50, LED51, LED52, LED53, LED54, LED55, LED56, LED57, LED58, LED59, LED60, LED61, LED62, LED63, LED64, LED65, LED66, LED67, LED68, LED69, LED70, LED71, LED72, LED73, LED74, LED75, LED76, LED77, LED78, LED79, LED80, LED81, LED82, LED83, LED84, LED85, LED86, LED87, LED88, LED89, LED90, LED91, LED92, LED93, LED94, LED95, LED96, LED97, LED98, LED99, LED100.

X16 orientation is shown on the real view picture

Realistic View



Dahlia Carrier Board

Assembly Drawing.PCBDwf

Revision V1.1

11/11/2020

Toradex
Swiss. Embedded. Computing.

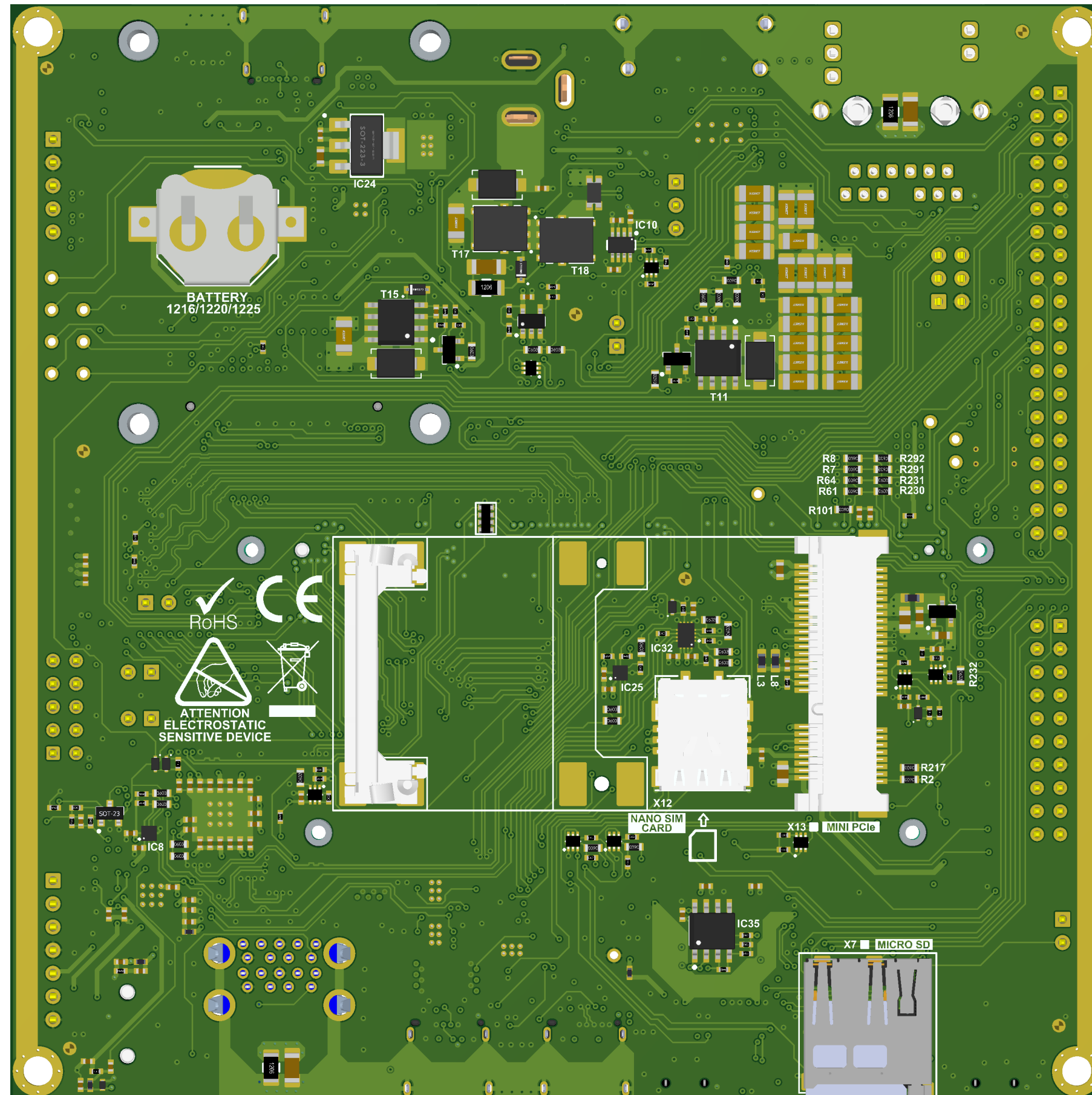
Toradex AG
Ebenastrasse 10
6048 Horw
Switzerland

SCALE 2:1

A3

SHEET 3 OF 4

Realistic View



Dahlia Carrier Board

Assembly Drawing.PCBDwf

Revision V1.1

11/11/2020

Toradex
Swiss. Embedded. Computing.

SCALE 2:1

A3

SHEET 4 OF 4

Toradex AG
Ebenastrasse 10
6048 Horw
Switzerland