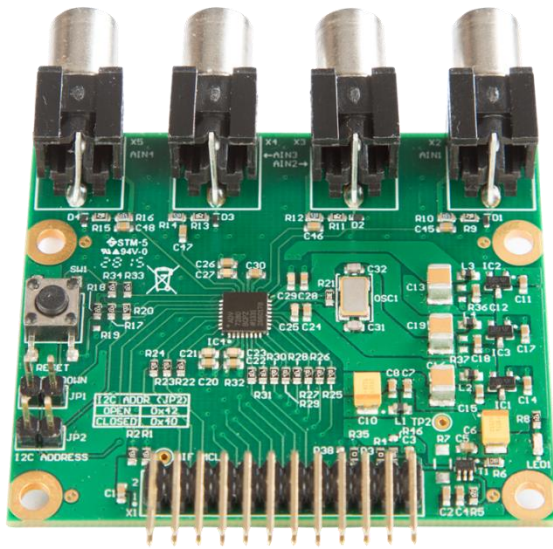


# Analogue Camera Adapter

## Errata Document



## Document Revision History

Date	Doc. Rev.	Notes
2016-10-06	Rev. 1.0	Initial Release
2017-06-14	Rev. 1.1	Removed document meta-data

## Overview

---

Errata #1: Bad picture quality when used with Apalis Evaluation Board .....	4
---	---

---

## Errata #1: Bad picture quality when used with Apalis Evaluation Board

---

Affected Version: Analogue Camera Adapter V2.0A

Fixed in: Analogue Camera Adapter V2.0B

### 1.1 Description

When the Analogue Camera Adapter is connected to the Apalis Evaluation Board in particular in combination with an Apalis iMX6 module, the obtained picture shows serious quality issues.

This is due to low signal drive strength of the data signals in combination with the series resistors placed between the ADV7280 Video Decoder (IC4) and the connector X1.

### 1.2 Workarounds

There are several workarounds possible

1. Increase the drive strength of the output signals of the ADV7280 Video decoder by software. See ADV7280 datasheet for details.
2. Use a shorter ribbon cable to connect the Analogue Camera Adapter to the Apalis Evaluation Board.
3. Replace the twelve 47 Ohm series resistors with 22 Ohm on the Analogue Camera Adapter: R22 to R33.

**DISCLAIMER:**

Copyright © Toradex AG. All rights reserved. All data is for information purposes only and not guaranteed for legal purposes. Information has been carefully checked and is believed to be accurate; however, no responsibility is assumed for inaccuracies.

Brand and product names are trademarks or registered trademarks of their respective owners. Specifications are subject to change without notice.