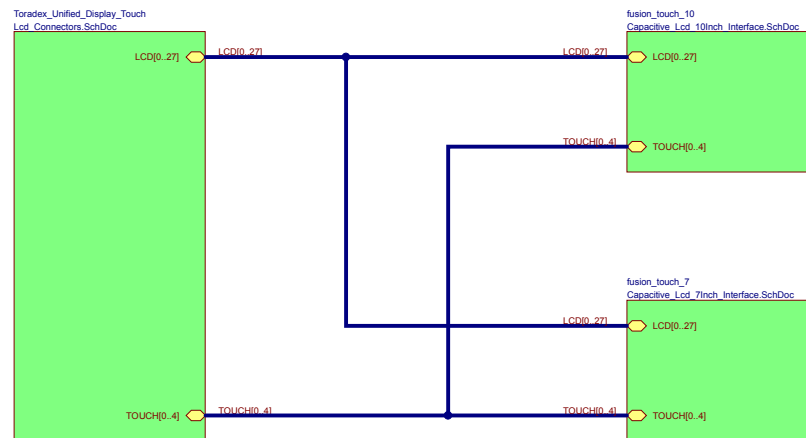
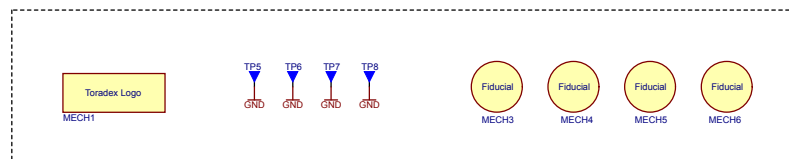
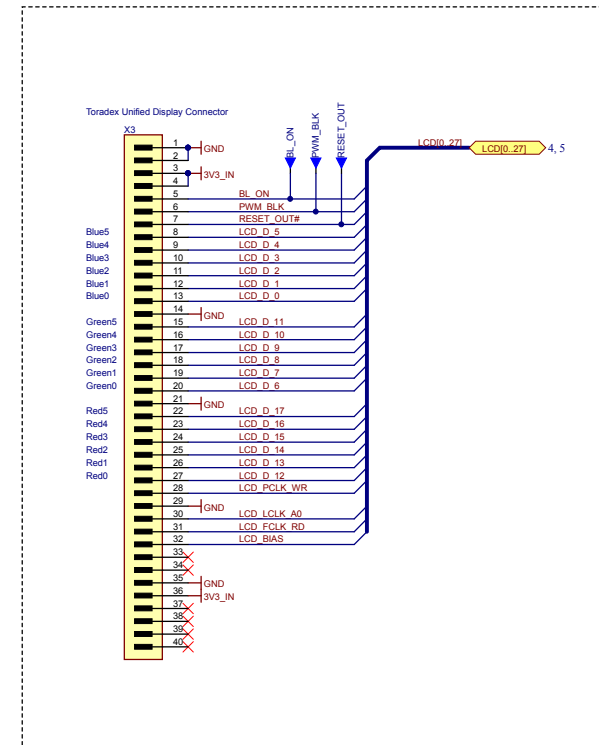
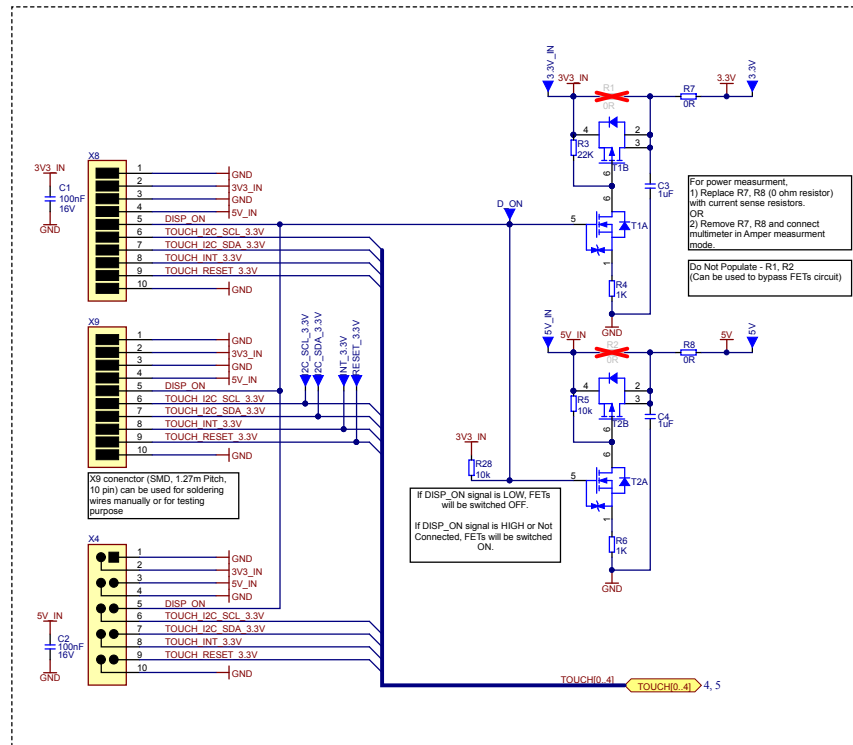


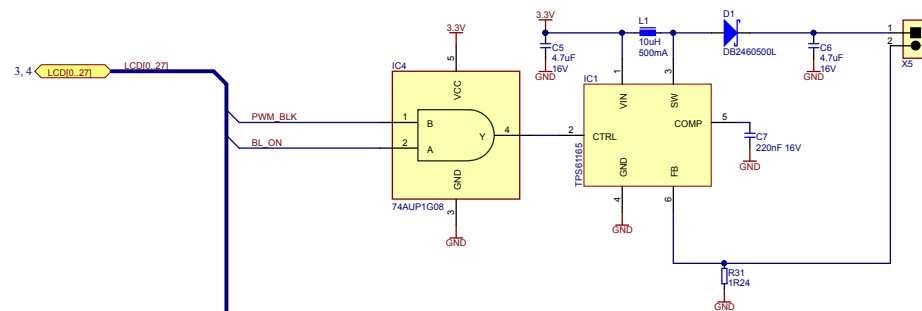
	1	2	3	4	5	6	7	8																	
A	<div>REVISION HISTORY</div> <div>1. Design Revision V1.0 : Preliminary design. Date: 10th March 2015</div> <div>2. New Hardware Revision, Capacitive Multi-Touch Adapter V1.1</div> <div>3. LCD Connectors Schematic Page<ul style="list-style-type: none"><li>- Connector X4A and X4B has been renamed to X9 and X8 respectively.</li><li>- Test points for RESET_3.3V, INT_3.3V, I2C_SDA_3.3V, I2C_SCL_3.3V, BL_ON, PWM_BLK and DISP_ON signals have been added.</li><li>- Signal DISP_ON has been pulled-up to 3.3V using 10K resistor (R28)</li><li>- Resistor (R7 and R8, 0 ohm) have been added in serie to the 3.3V and 5V power lines.</li></ul></div> <div>4. Capacitive Touch 7" LCD Schematic Page<ul style="list-style-type: none"><li>- Conenctors X7 has been replaced with new Molex connector.</li></ul></div> <div>5. Capacitive Touch 10" LCD Schematic Page<ul style="list-style-type: none"><li>- Conenctors X2 has been replaced with new Molex connector.</li></ul><div>Date: 29th November 2013</div><div>6. All schematic pages<ul style="list-style-type: none"><li>- Schematic page template has been updated.</li><li>- "Port Cross Reference" has been added to the project.</li></ul></div><div>7. PCB Library<ul style="list-style-type: none"><li>- Missing 3D models for some components have been added in the PCB library.</li></ul></div><div>8. Capacitive Multi-Touch Adapter PCB layout.<ul style="list-style-type: none"><li>- Component footprints have been updated after the PCB library changes.</li><li>- PCB layer thickness and sequence have been corrected in the Layer Stackup Manager.</li></ul><div>Date: 22nd May 2015</div></div></div>							<div>Hardware Architecture</div> <div>Hardware Architecture Capacitive Touch Interface Board SchDoc</div> <div></div>	A																
B									B																
C									C																
D								<div><div><div><div><div></div><div></div></div><div>Toradex</div><div>Swiss. Embedded. Computing.</div></div><div><table><tr><td colspan="2">Title: <b>Capacitive Multi-Touch Adapter</b></td><td colspan="2">Toradex AG Altsagenstrasse 5 Horw 6048 Switzerland</td></tr><tr><td>Size: A3</td><td>Number: 1.</td><td>Revision: V1.1</td><td></td></tr><tr><td>Date: 5/22/2015</td><td>Time: 11:03:30 AM</td><td>Sheet 1 of 5</td><td></td></tr><tr><td colspan="2">File: RevisionHistory.SchDoc</td><td colspan="2"></td></tr></table></div></div></div>	Title: <b>Capacitive Multi-Touch Adapter</b>		Toradex AG Altsagenstrasse 5 Horw 6048 Switzerland		Size: A3	Number: 1.	Revision: V1.1		Date: 5/22/2015	Time: 11:03:30 AM	Sheet 1 of 5		File: RevisionHistory.SchDoc				D
Title: <b>Capacitive Multi-Touch Adapter</b>		Toradex AG Altsagenstrasse 5 Horw 6048 Switzerland																							
Size: A3	Number: 1.	Revision: V1.1																							
Date: 5/22/2015	Time: 11:03:30 AM	Sheet 1 of 5																							
File: RevisionHistory.SchDoc																									
	1	2	3	4	5	6	7	8																	



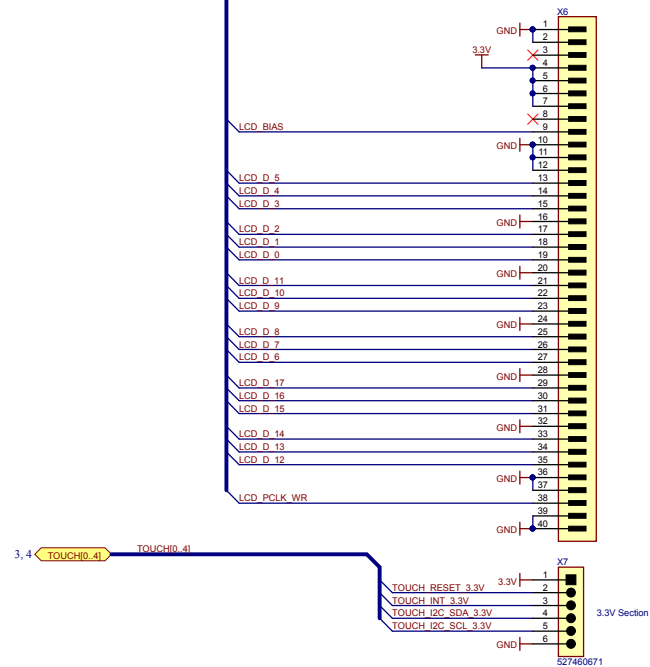
Title <b>Capacitive Multi-Touch Adapter</b>			Toradex AG Altsägenstrasse 5 Horn 6048 Switzerland	
Size: <b>A3</b>	Number: <b>2.</b>	Revision: <b>1.1</b>		
Date: <b>5/22/2015</b>	Time: <b>11:03:30 AM</b>	Sheet <b>2</b>	of <b>5</b>	
File: <b>Hardware Architecture Capacitive Touch Interface Board.SchDoc</b>				







## Fusion Touch 7



Title <b>Capacitive Multi-Touch Adapter</b>		Toradex AG Altsägenstrasse 5 Horn 6048 Switzerland	
Size: A3	Number: 5	Revision: 1.1	
Date: 5/22/2015	Time: 11:03:30 AM	Sheet 5 of 5	
File: Capacitive Lcd 7inch Interface.SchDoc			